

## Cutter Lane, SE10

£565,000

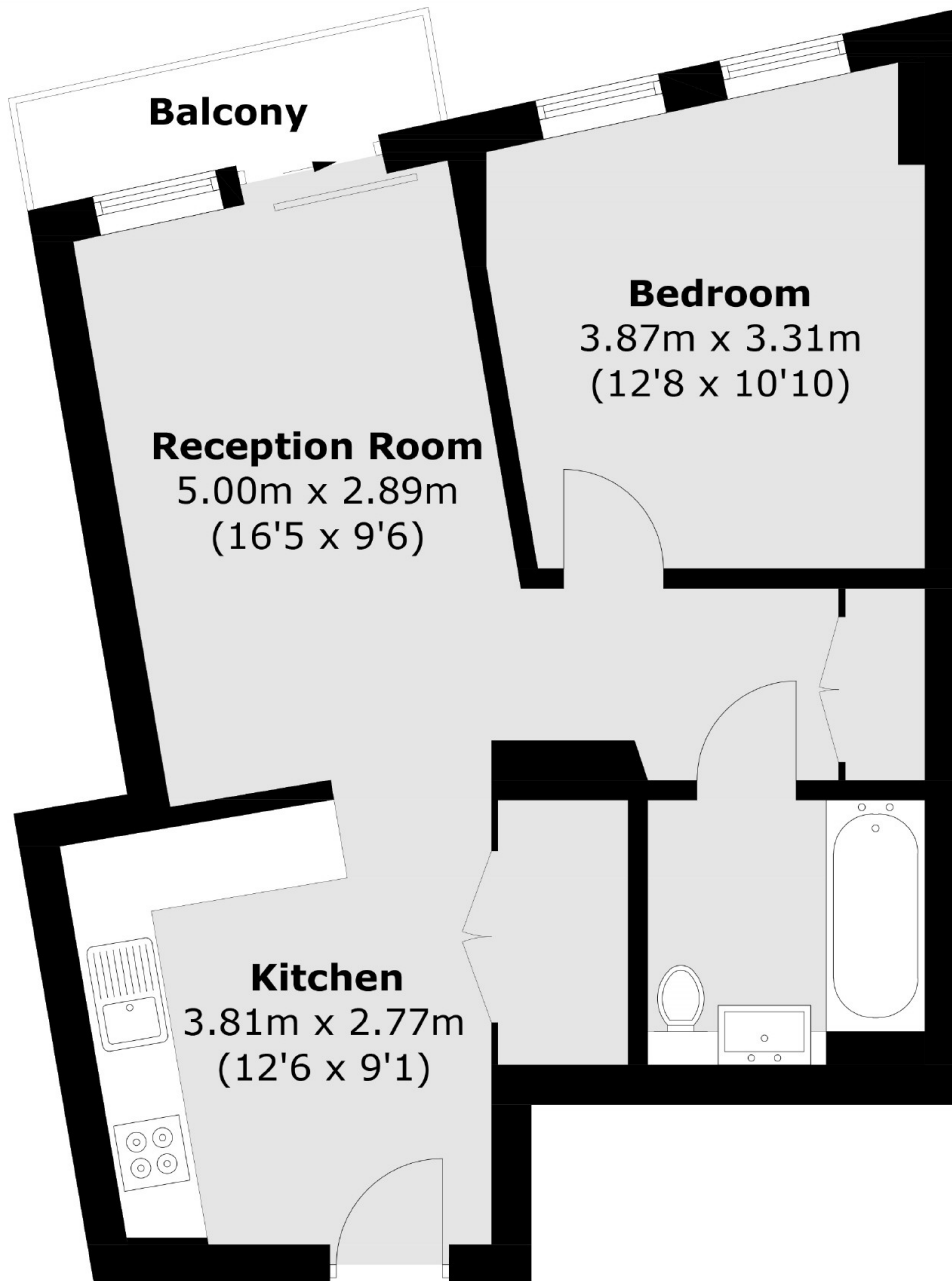
£585,000-£615,000 A luxurious one bedroom apartment with a private balcony and amazing views across the city. The prestigious building is in a sought after location and has been finished to a phenomenal standard which further benefits from a 24 hour concierge and gym and swimming facilities for residents only.

Located a short walk from North Greenwich bus and tube station, adjacent to the IFS Cloud Cable Car and opposite North Greenwich Pier, transport links are readily available.

### Features

- Amazing River Views
- Sought After Location
- Access To Residents Roof Terraces
- 24 Hour Concierge
- Private Balcony
- Modern Throughout

Cutter Lane,  
London, SE10



Total area (approx.): 46.9 sq. m (504.8 sq. ft)  
Balcony: 2.5 sq. m (26.9 sq. ft)