

Cable Walk, SE10

£693 Per week

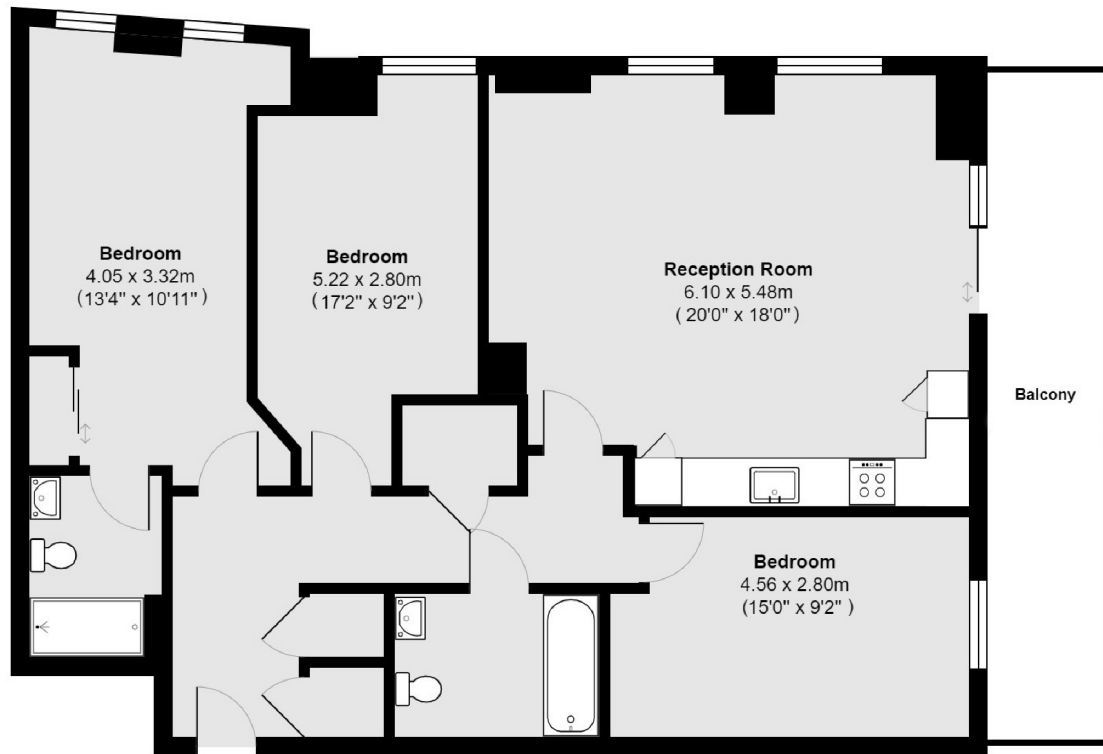
A three bedroom apartment on the sixth floor of Lariat Apartments. This spacious property consists of an open plan living room, kitchen with integrated appliances, wood flooring and a private balcony. Further benefits include a concierge service and gym facilities.

Enderby Wharf is within perfectly positioned close to the River Thames, North Greenwich Station for the Jubilee Line is 1.45 miles away, Maze Hill Mainline Station is 0.5 miles. Local places of Interest, Greenwich Market, Greenwich Park and the O2 for shopping.

Features

- Three Double Bedrooms
- Two Bathrooms
- Spacious
- Wood Flooring
- Private Balcony
- On Site Concierge

Cable Walk, London, SE10



Total area 99.7 sq m (approx) (1073 sq ft approx)
Balcony total area 12.6 sq m (approx) (135 sq ft approx)