



Cutter Lane, SE10

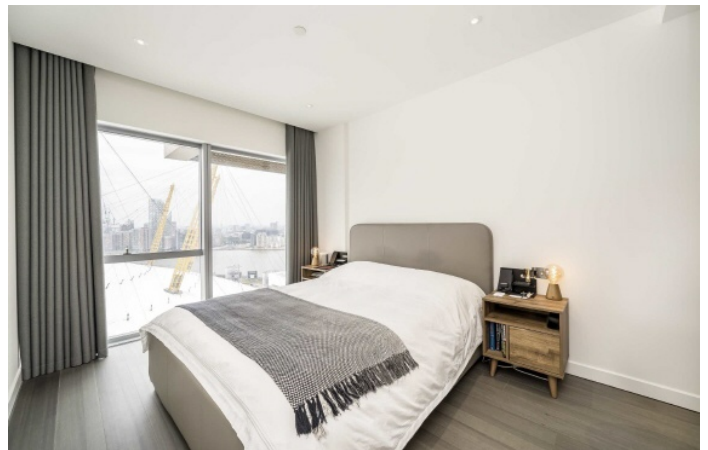
£900,000

A luxurious two-bedroom, two-bathroom apartment with a private balcony and stunning city views, as well as one secure parking space. The prestigious building is in a sought after location and has been finished to a phenomenal standard which further benefits from a 24 hour concierge and gym and swimming facilities for residents only.

Located a short walk from North Greenwich bus and tube station, adjacent to the IFS Cloud Cable Car and opposite North Greenwich Pier, transport links are readily available.

Features

Includes conveniently positioned private parking space
Amazing River Views
19th Floor
24 Hour Concierge
Private Balcony
Modern Throughout

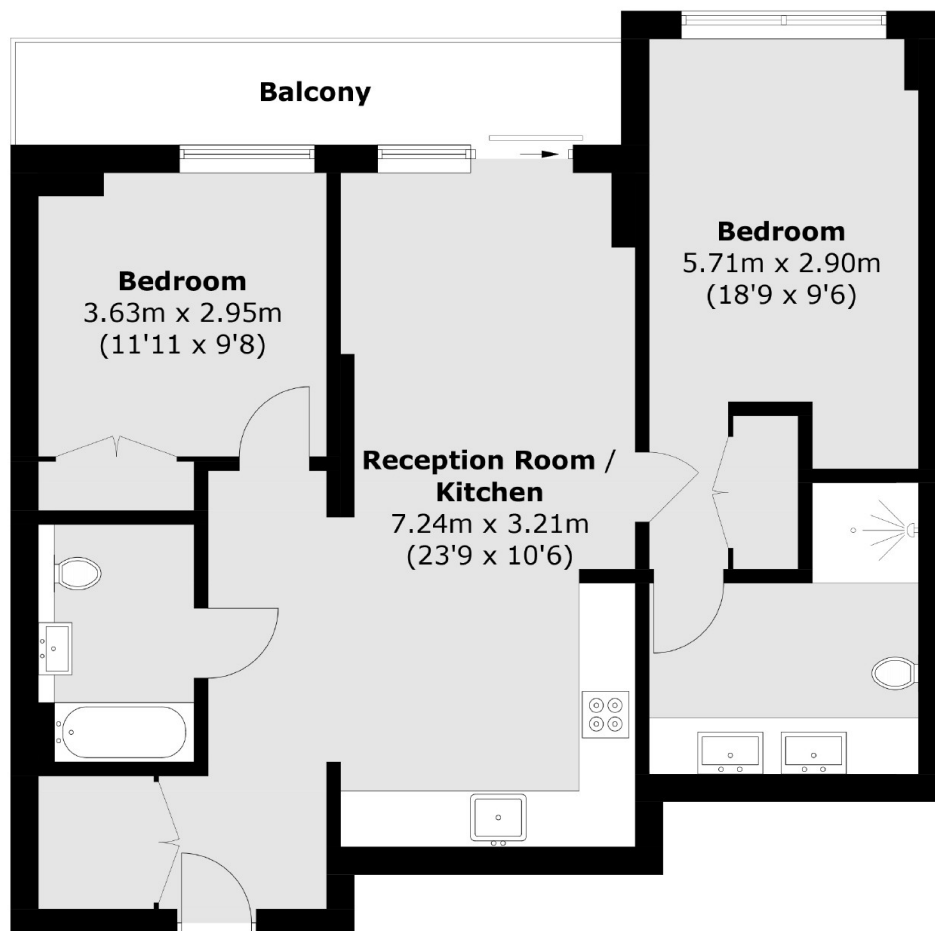


Cutter Lane, SE10

A 24 hour concierge team is on hand to assist you in any way they can and they are located at the Tom Dixon designed ground floor lobby.



Cutter Lane,
London, SE10



Total area (approx.): 72.5 sq. m (780.4 sq. ft)
Balcony area : 7.1 sq. m (76.4 sq. ft)