



Greenwich South Street, SE10

£475,000

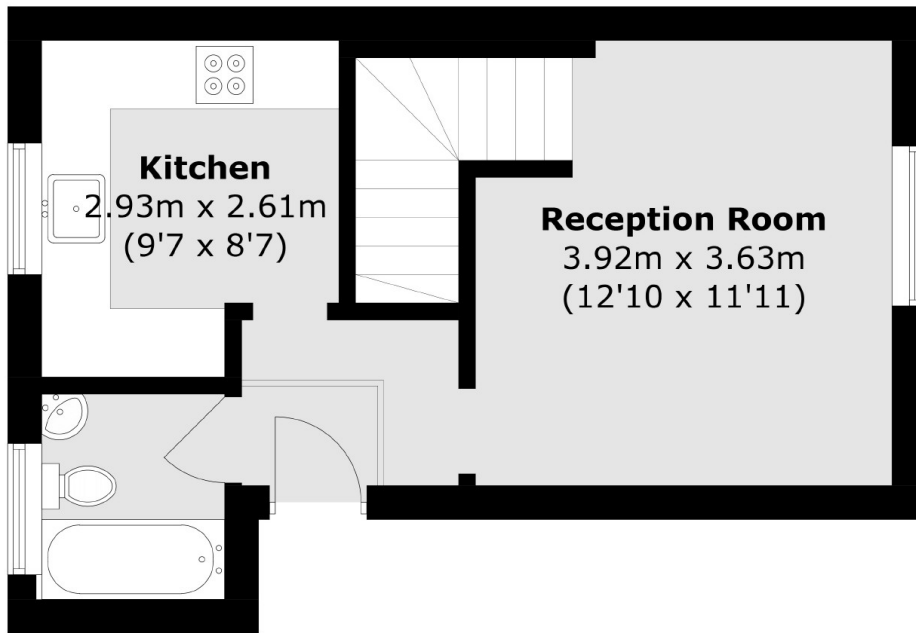
A two bedroom split level period conversion flat in a sought after location presented in immaculate condition, which would make an ideal first purchase, further benefits include share of the freehold and off street parking to the rear.

Greenwich South Street is located in West Greenwich and offers a quick commute to Canary Wharf, London Bridge, Cannon Street, and Kings Cross via the Greenwich Mainline and DLR Station. Greenwich Park and Greenwich Market are a short walk away and offer a variety of local stores, restaurants, and bars for residents to enjoy.

Features

Two Bedrooms
Chain Free
Split Level
Period Conversion
Sought After Location
Ideal First Purchase

Greenwich South Street,
London, SE10



Ground Floor



Lower Ground Floor

Total area (approx.): 59.3 sq. m (638.3 sq. ft)