



Greenwich High Road, SE10

£475,000

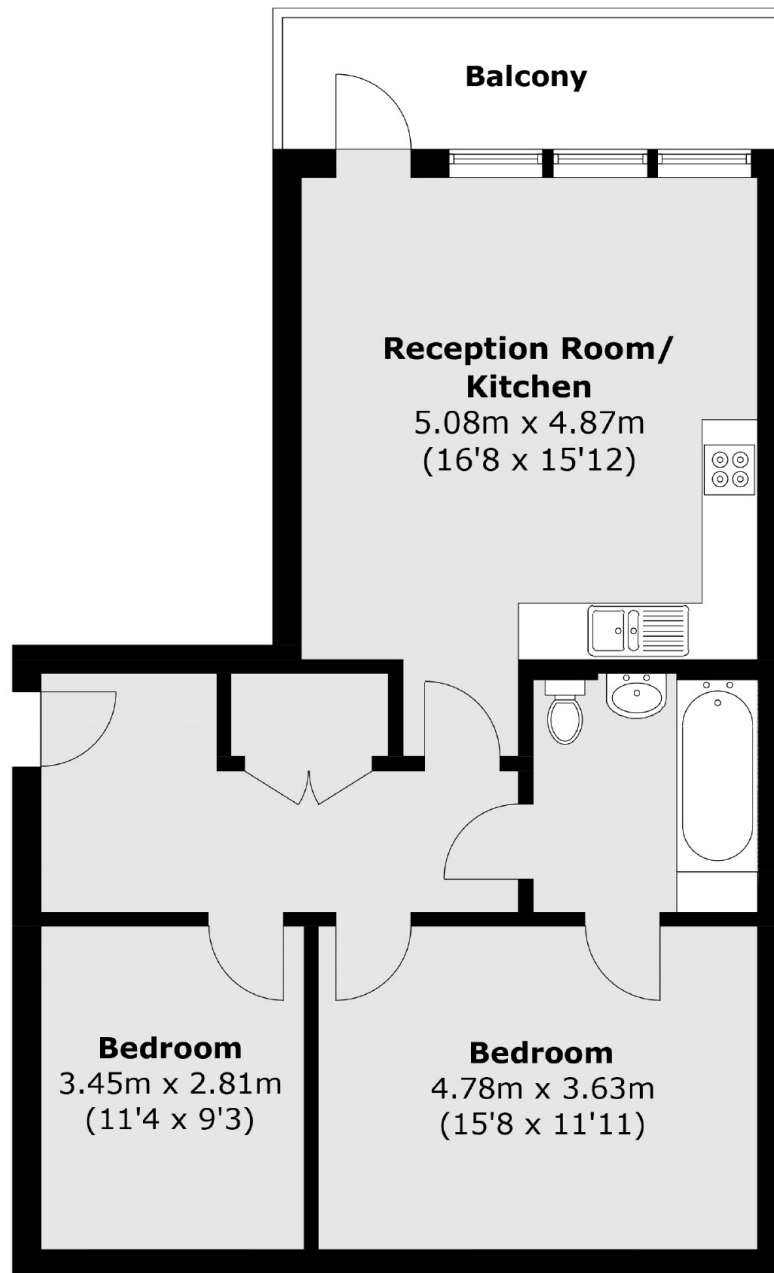
A perfectly presented, two double bedroom modern apartment, positioned in Cowan House, a popular gated-development. The property also benefits from a private balcony, overlooking the creek and towards London, the perfect space for alfresco dining, plus a long lease. This property further benefits from a private parking space.

Cowan House is conveniently located at the lower end of Greenwich High Road for all the attractions Royal Greenwich has to offer, moments from both the DLR at Deptford Bridge as well as the DLR and mainline at Greenwich station; giving fast and easy access into both Canary Wharf and the City.

Features

O.I.E.O
Finished To A High Standard
Sought After Location
Gated
Private Rear Balcony
Amazing Views

Greenwich High Road,
London, SE10



Total area (approx.): 72.6 sq. m (781.4 sq. ft)

Balcony area (approx.): 8.2 sq. m (88.2 sq. ft)