



Greenwich High Road, SE10

£499,999

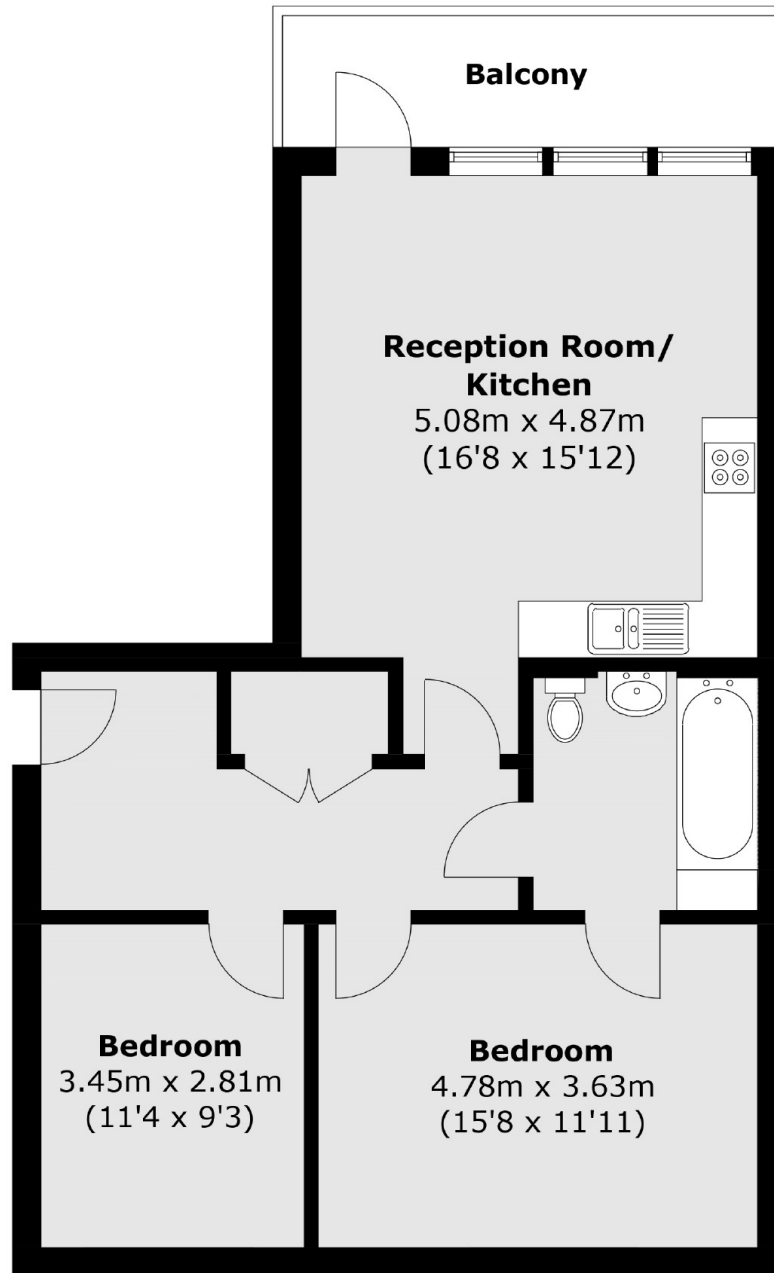
A perfectly presented, two double bedroom modern apartment, positioned in Cowan House, a popular gated-development. The property also benefits from a private balcony, overlooking the creek and towards London, the perfect space for alfresco dining, plus a long lease. This property further benefits from a private parking space.

Cowan House is conveniently located at the lower end of Greenwich High Road for all the attractions Royal Greenwich has to offer, moments from both the DLR at Deptford Bridge as well as the DLR and mainline at Greenwich station; giving fast and easy access into both Canary Wharf and the City.

Features

O.I.E.O
Finished To A High Standard
Sought After Location
Gated
Private Rear Balcony
Amazing Views

Greenwich High Road,
London, SE10



Total area (approx.): 72.6 sq. m (781.4 sq. ft)

Balcony area (approx.): 8.2 sq. m (88.2 sq. ft)

Dexters

Greenwich
275 Greenwich High Road
Greenwich
London
Sales
020 8815 2215

Energy Rating: B. We aim to make our particulars both accurate and reliable. However they are not guaranteed; nor do they form part of an offer or contract. If you require clarification on any points then please contact us, especially if you're traveling some distance to view. Please note that appliances and heating systems have not been tested and therefore no warranties can be given as to their good working order.

 **RICS** | Regulated
Estate Agent
and Letting Agent

dexters.co.uk