



## Park Row, SE10

£1,500,000

A charming four bedroom Victorian period house in the heart of Central Greenwich, a short walk to mainline and DLR stations and positioned on Park Row, a prominent road that graces the entrance of Royal Greenwich Park and the Maritime museum.

Transport options in Park Row and Greenwich are excellent and well connected by various public transport links, including Greenwich and Cutty Sark DLR stations, which offer easy access to Canary Wharf, the City of London, and other parts of the capital.

### Features

- O.I.E.O
- Sought After Location
- Period Family Home
- Two Bathrooms
- Downstairs W.C.
- Moments from Greenwich Park

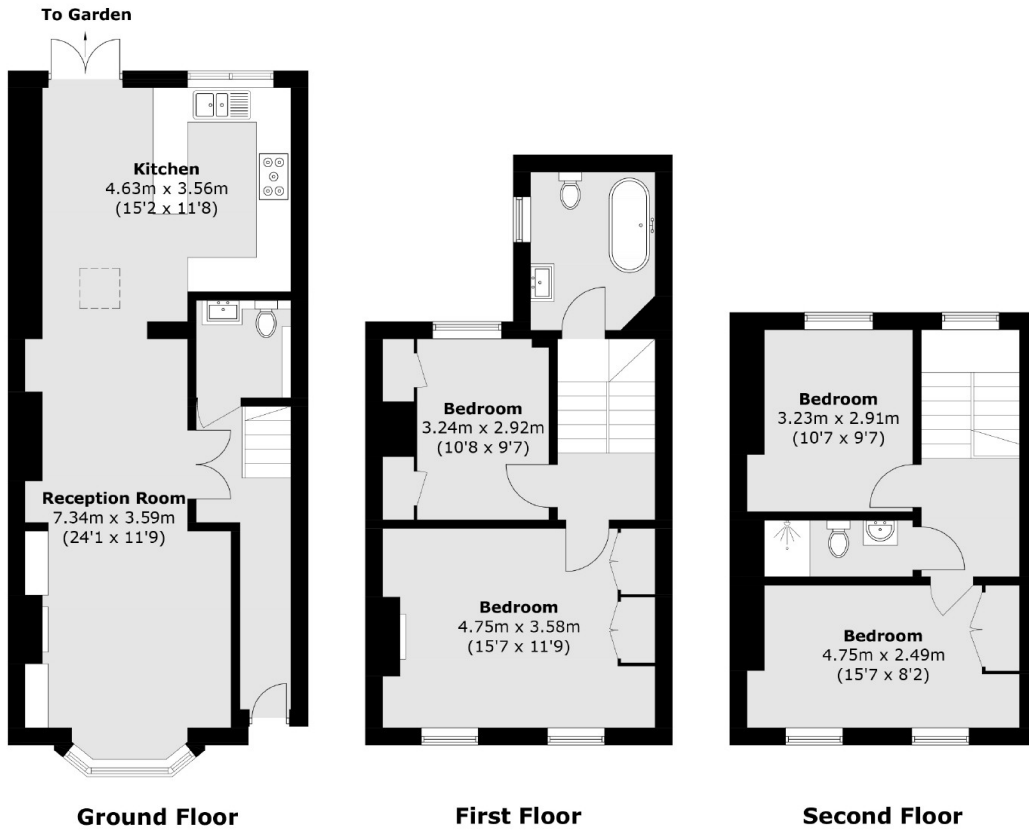


## Park Row, SE10

The accommodation offers just under 1,400 sq ft and begins on the ground floor two good sized reception rooms which are off the entrance hall, and a kitchen towards the back with access onto a large garden laid to lawn via the patio doors. The property further benefits from a downstairs W.C. The first floor has two double bedrooms and a separate family bathroom and the top floor has another Two bedrooms and a bathroom.



Park Row,  
London, SE10



Total area (approx.): 124.3 sq. m (1,338.0 sq. ft)