



## Horseferry Place, SE10

£400,000

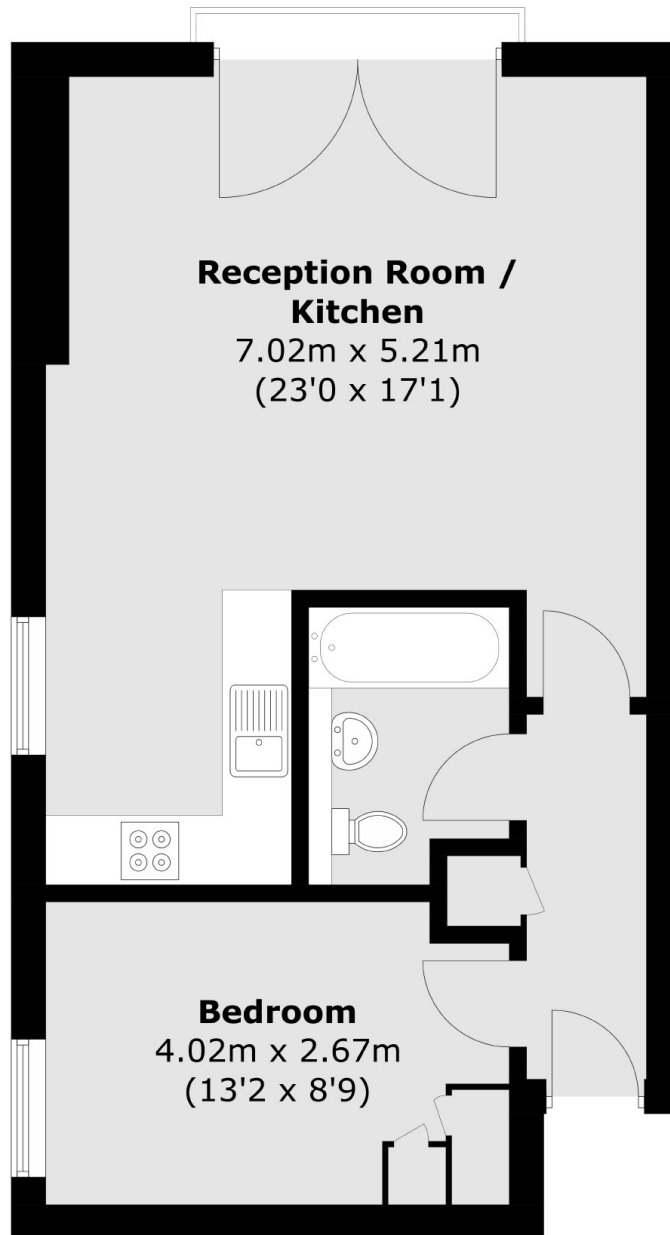
A charming one bedroom fourth floor apartment in a sought after location with a Juliette balcony, a large private storage unit in the basement, secure cycle parking and a video entry system. The property further benefits from plenty of living space, and a stylish interior.

Wood Wharf is a desirable residential development, positioned on the banks of the River Thames. Waitrose supermarket is just moments away, and within close proximity there are a variety of shops, restaurants and bars, in addition to various parks, which are great for enjoying with the family. Cutty Sark DLR is just 0.3 miles away, offering swift access into both Canary Wharf and the City. Nearby Greenwich Station offers access to Central London within under 10 minutes.

### Features

- Modern Apartment
- Concierge
- No Work Required
- Ideal First Purchase
- Sought After Location
- Over 100 Year Lease

# Horseferry Place, London, SE10



Total area (approx.): 50.3 sq. m (541.4 sq. ft)