

Telcon Way, SE10

£525,000

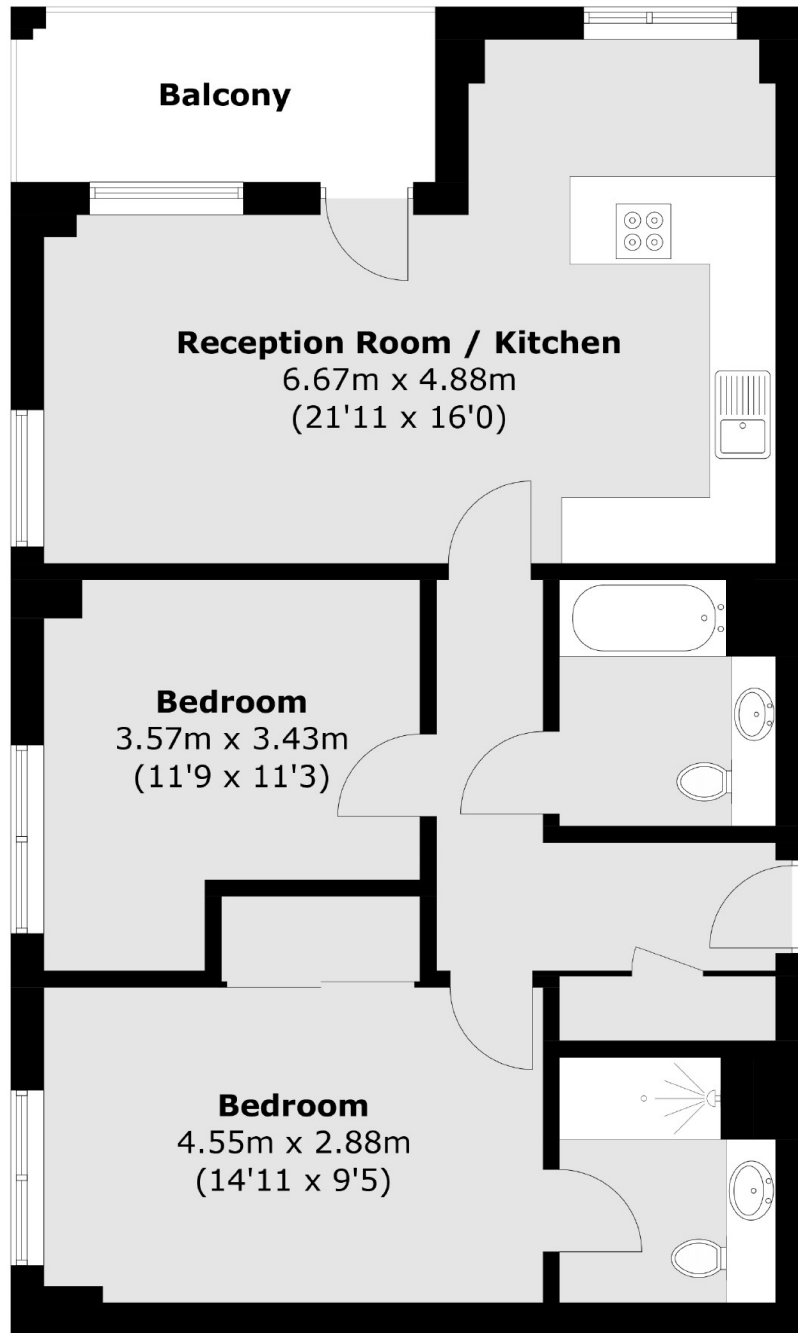
A beautifully presented two-bedroom, two-bathroom flat located in the highly sought-after area of East Greenwich. Benefiting from great city views and a private balcony.

Gooch House is situated just a short walk into Greenwich Village with an array of shops, restaurants, and café's together with Royal Greenwich Park. Greenwich also has excellent transports links into central London from Maze Hill mainline station, the Cutty Sark DLR, Jubilee line from North Greenwich Tube station, and the Uber boat services into Canary Wharf.

Features

- Amazing City Views
- Private Balcony
- Communal Garden
- Sought After Location
- Two Bathrooms
- Finished To A High Standard

Telcon Way,
London, SE10



Seventh Floor

Total area (approx.): 70.9 sq. m (763.2 sq. ft)

Dexters

Greenwich
275 Greenwich High Road
Greenwich
London
Sales
020 8815 2215

Energy Rating: . We aim to make our particulars both accurate and reliable. However they are not guaranteed; nor do they form part of an offer or contract. If you require clarification on any points then please contact us, especially if you're traveling some distance to view. Please note that appliances and heating systems have not been tested and therefore no warranties can be given as to their good working order.

 **RICS** | Regulated
Estate Agent
and Letting Agent

dexters.co.uk