



Wharf Street, SE8

£850,000

Riverside Live-Work House in Prime Location

An opportunity to acquire this unique riverside live-work house, offering an ideal blend of residential comfort and professional convenience. This property features a versatile ground-floor studio, perfect for creative or home office use, and boasts two private balconies with stunning views. Further benefiting from a 24h Concierge and Private Underground Parking.

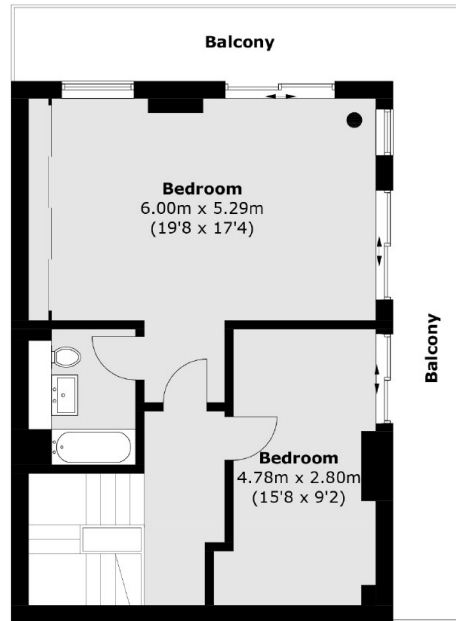
Situated in a highly sought-after area, this home has been meticulously finished to a high standard throughout. Its prime location is just a short walk from Deptford train station, providing easy access to London Bridge and Cannon Street, and Cutty Sark DLR in Greenwich, connecting you to Canary Wharf and Bank.

Enjoy a vibrant lifestyle with an array of restaurants, bars, and shops on your doorstep along Deptford High Street, and the historic charm of Greenwich just a leisurely stroll away. Located on the Thames River Path, you can explore the scenic route past iconic landmarks like the Cutty Sark and the Old Royal Naval College, all the way to the O2 Arena.

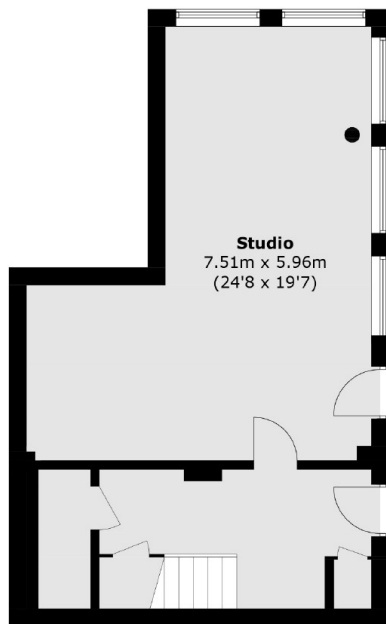
Features

- Work From Home Studio
- Just under 1700 Sq Ft
- No Work Required
- Sought After Location
- Modern House
- Two Private Balconies
- Private Secure Parking
- 24hr Concierge

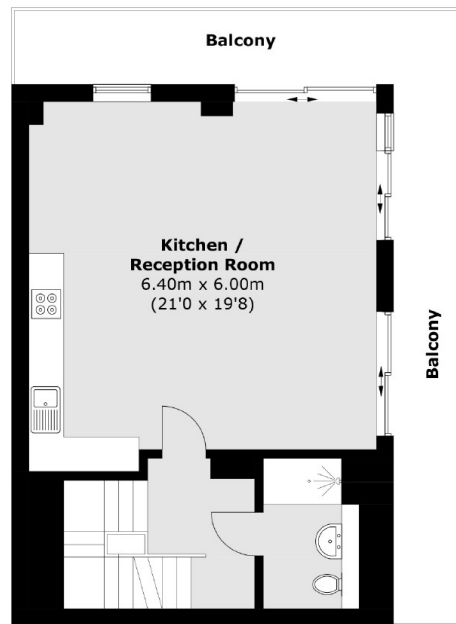
Wharf Street,
London, SE8



Second Floor



Ground Floor



First Floor

Total area (approx.): 155.1 sq. m (1,669.4 sq. ft)
Balcony area (approx.): 42.5 sq. m (457.5 sq. ft)

Dexters

Greenwich
275 Greenwich High Road
Greenwich
London
Sales
020 8815 2215

Energy Rating: C. We aim to make our particulars both accurate and reliable. However they are not guaranteed; nor do they form part of an offer or contract. If you require clarification on any points then please contact us, especially if you're traveling some distance to view. Please note that appliances and heating systems have not been tested and therefore no warranties can be given as to their good working order.

 **RICS** Regulated Estate Agent and Letting Agent

dexters.co.uk