



Greenroof Way, SE10

£300,000

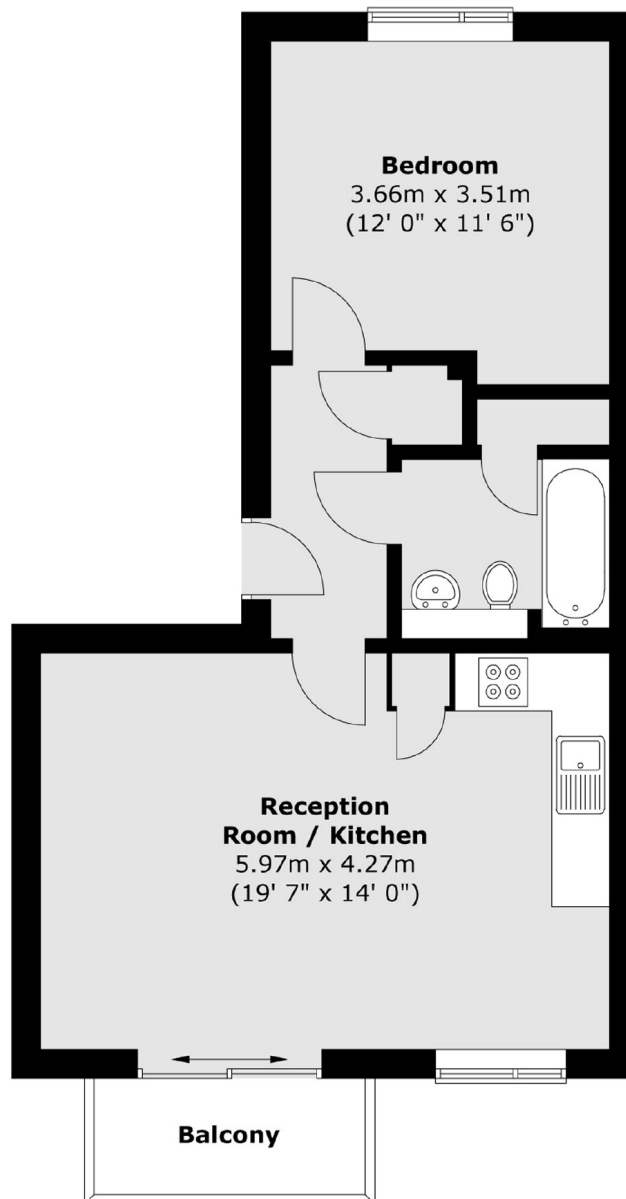
A well presented one bedroom apartment in this modern development, Further benefiting from being in a sought after location and has a private balcony as well as a private decking area at the front. This property also has secure bicycle storage and a 24 hour concierge.

Located on the Greenwich Peninsula providing easy access to North Greenwich Tube Station which provides swift access to Canary Wharf, London Bridge and the West End via the Jubilee Line while the Thames Clipper provides an alternative way to commute. Nearby the O2 Arena offers an array of shops, restaurants, bars and a cinema for local residents to enjoy. The property is currently in the catchment area for the very popular and "outstanding" rated Millennium Primary School.

Features

- Communal Garden
- Sought After Location
- Private Balcony
- Chain Free
- Ideal First Purchase
- Modern Throughout

Greenroof Way,
London, SE10



Total area (approx.) : 48.3 sq. m (520 sq. ft)
Total balcony area (approx.) : 3.5 sq. m (37 sq. ft)