



West Parkside, SE10

£425,000

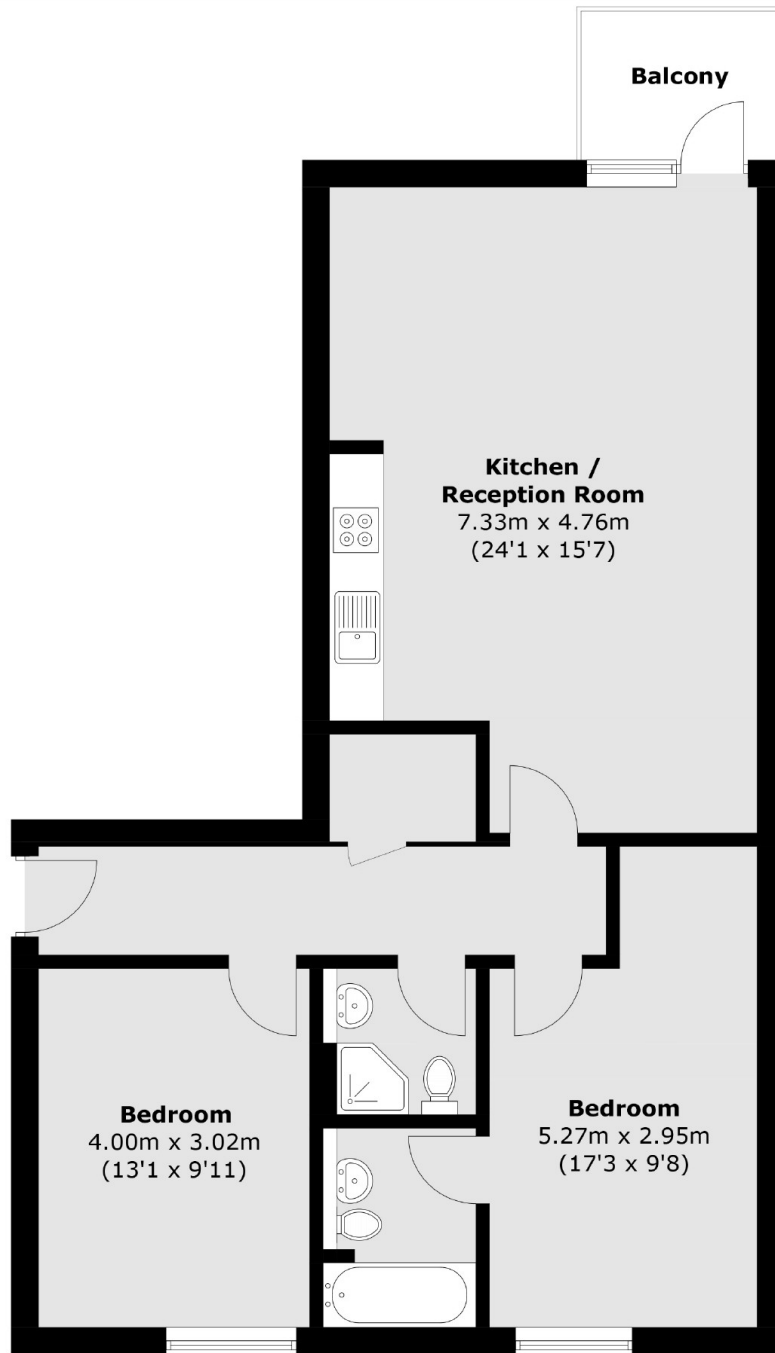
This spacious and well maintained two bedroom apartment is located in the popular development of Greenwich Millennium Village. This property has an abundance of light throughout. Further benefiting from two bathrooms and a private balcony.

Farnsworth Court is set within the Greenwich Millennium Village providing easy access to North Greenwich Tube Station which provides swift access to Canary Wharf, London Bridge and the West End via the Jubilee Line while the Thames Clipper provides an alternative way to commute. Nearby the O2 Arena offers an array of shops, restaurants, bars and a cinema for local residents to enjoy. The property is currently in the catchment area for the very popular and "outstanding" rated Millennium Primary School.

Features

- Two Bedrooms
- Two Bathrooms
- Modern
- Sought After Location
- Private Balcony
- Ideal First Purchase

West Parkside,
London, SE10



Second Floor

Total area (approx.): 78.1 sq. m (840.7 sq. ft)
Balcony area (approx.): 3.7 sq. m (39.8 sq. ft)