



Telegraph Avenue, SE10

£542 Per week

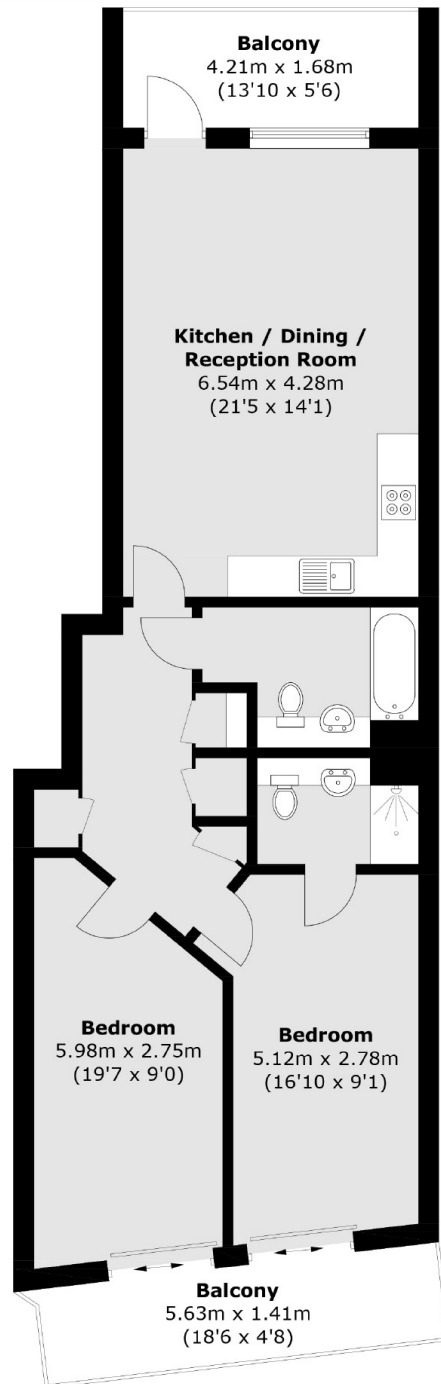
A well appointed two bedroom apartment situated in Enderby Wharf, Greenwich. Perfect for professionals and offering a 24-hour concierge and a well equipped gymnasium for residents. Boasting two bathrooms and two good size balconies with pleasant views.

This apartment is ideally located for the commuter, situated between a choice of three stations, which include North Greenwich (Jubilee), Maze Hill & Westcombe Park (Overground), with a large selection of (A) roads close by, making Central London and beyond easily accessible. The picturesque riverside location makes the walk into Greenwich town centre extremely enjoyable, whilst you are just a short distance from the beautiful open spaces of Greenwich Park.

Features

- Two Bedrooms
- Two Bathrooms
- Two Balconies
- Open-Plan Living
- Unfurnished
- Concierge & Gym

Telegraph Avenue, London, SE10



Total area (approx.): 79.6 sq. m (856.8 sq. ft)
Balconies: 15.5 sq. m (166.8 sq. ft)