



Fearon Street, SE10

£525,000

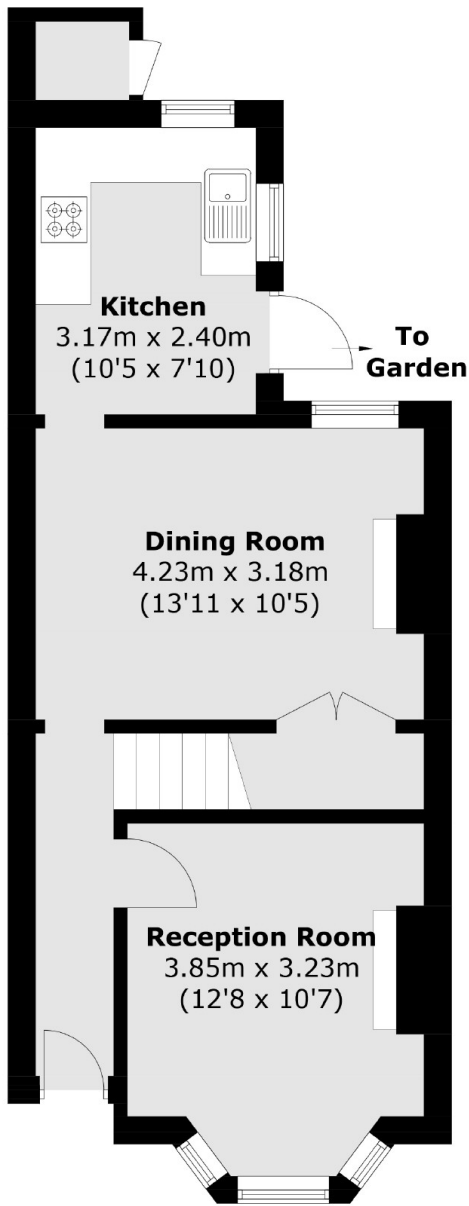
A charming two bedroom, mid terraced, Victorian family home which is located on this popular road in East Greenwich!

Fearon Street is a residential road located just on the cusp of East Greenwich and Charlton. This means it is perfectly located for quick access to the nearby retail park that includes a huge Sainsbury, ikea and M&S, plus is close to the north Greenwich Peninsula with O2 Arena, cable car service and underground

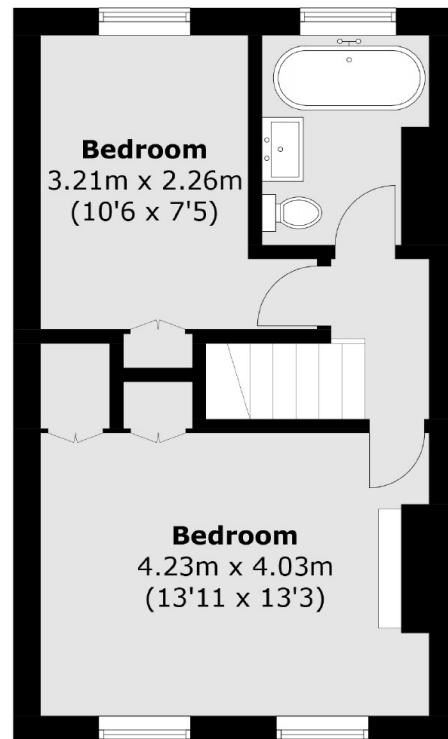
Features

- Freehold
- Two Bedrooms
- Period
- Sought After Location
- Potential To Extend STPP
- Chain Free

Fearon Street,
London, SE10



Ground Floor



First Floor

Total area (approx.): 71.9 sq. m (773.8 sq. ft)