



Cutter Lane, SE10

£576 Per week

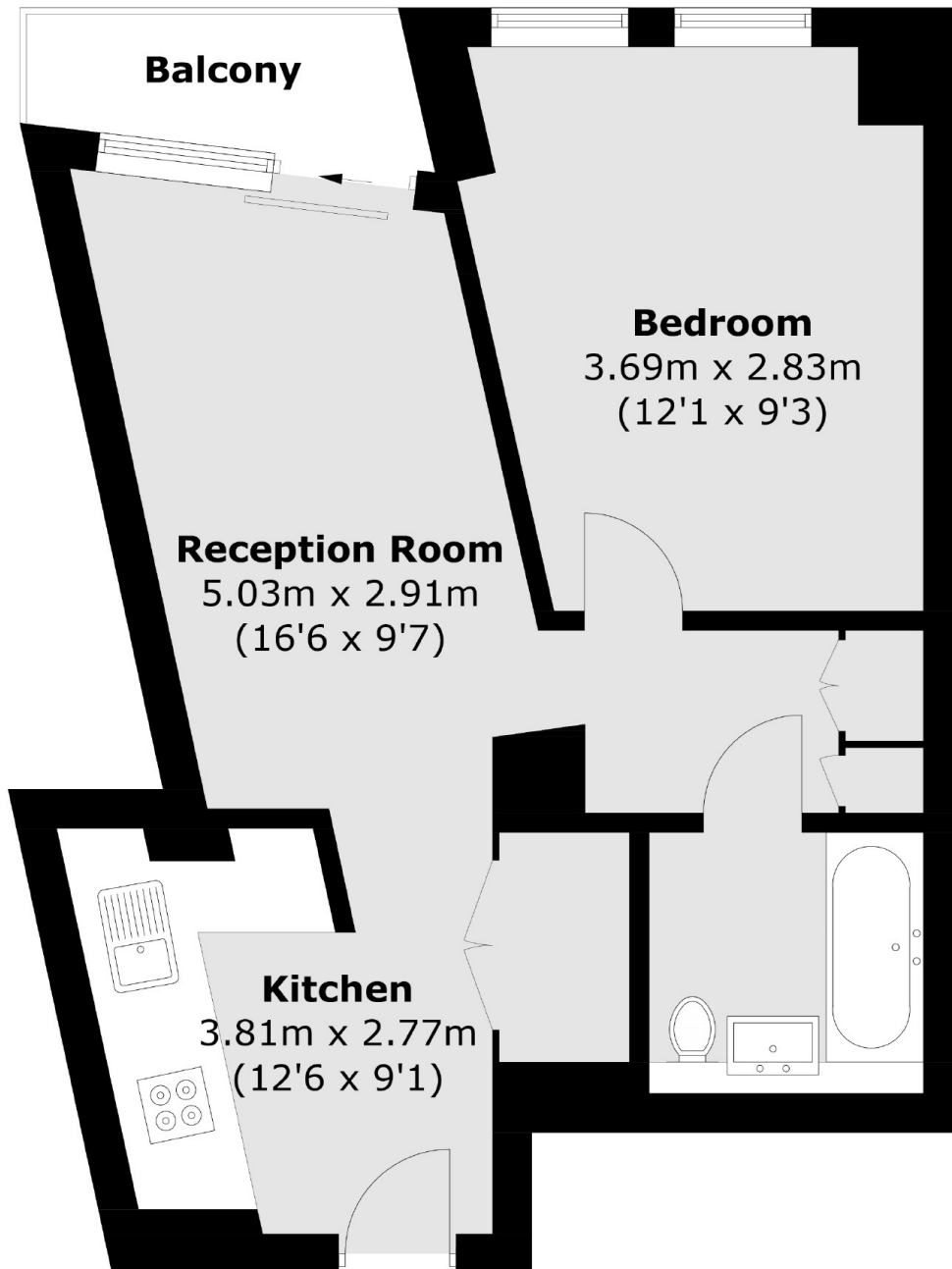
A stunning 17th floor one double bedroom apartment of this prestigious development. This grand and luxurious apartment has an open plan reception room, wooden flooring, a private balcony and direct river views. Offered furnished. Residents benefit from a concierge, gym, sauna, swimming pool, roof top terrace and cycle storage.

Cutter Lane is within walking distance of the shops, bars and restaurants of the O2 arena. Direct access to the Jubilee Line from North Greenwich is 0.3 miles away.

Features

- Luxury Development
- One Bedroom
- Private Balcony
- Direct River Views
- Concierge
- Access to luxury facilities

Cutter Lane,
London, SE10



Total area (approx.): 49.3 sq. m (530.7 sq. ft)
Balcony: 3.1 sq. m (33.4 sq. ft)