

## Randall Place, SE10

£799,950

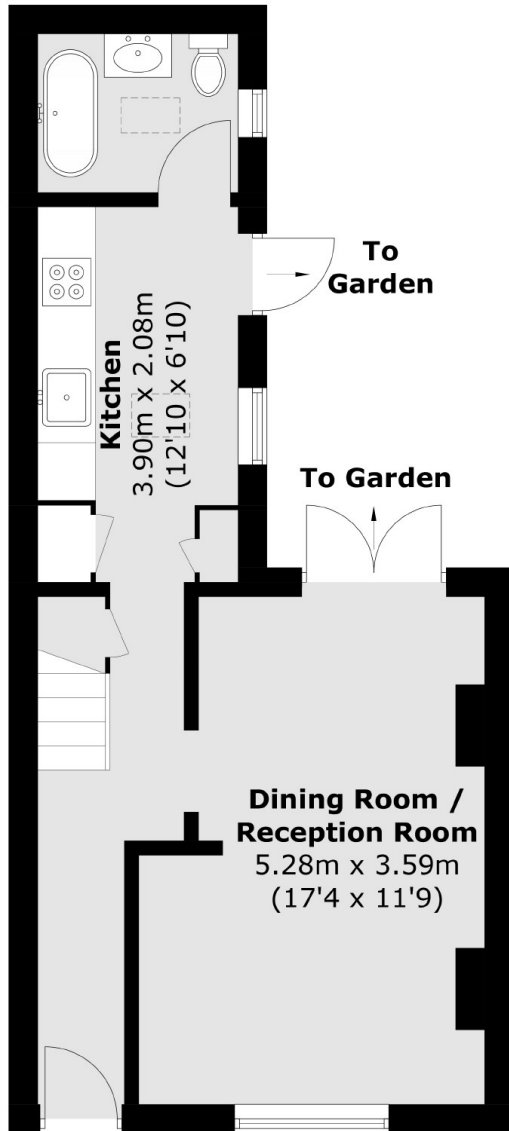
An immaculately presented two bedroom Victorian cottage that has been finished to a phenomenal standard, Situated in a sought after location in the heart of Greenwich. Further benefiting from a loft room and is offered to the market chain free.

Located in the heart of Greenwich for independent shops, bars and restaurants, Greenwich Mainline and DLR Station is a short walk away providing direct connections to Canary Wharf, Bank, London Bridge, Cannon Street and Kings Cross. While the Greenwich Park and Greenwich Market are both within easy reach.

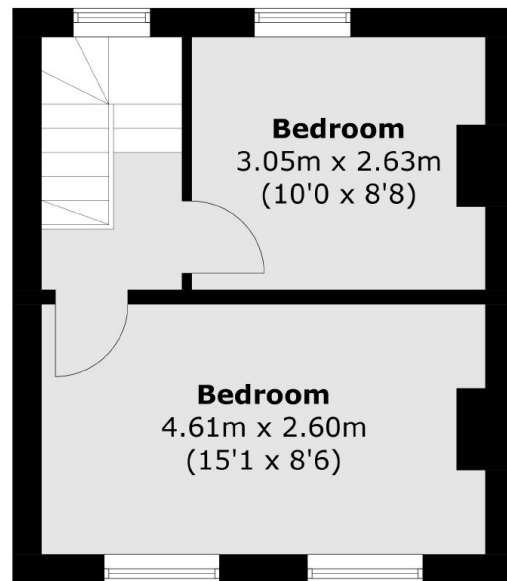
### Features

Two Bedrooms  
Immaculate Throughout  
Finished To A High Standard  
Chain Free  
Sought After Location  
No Work Required

Randall Place,  
London, SE10



**Ground Floor**



**First Floor**

Total area (approx.): 61.9 sq. m (666.2 sq. ft)