



Cable Walk, SE10

£600 Per week

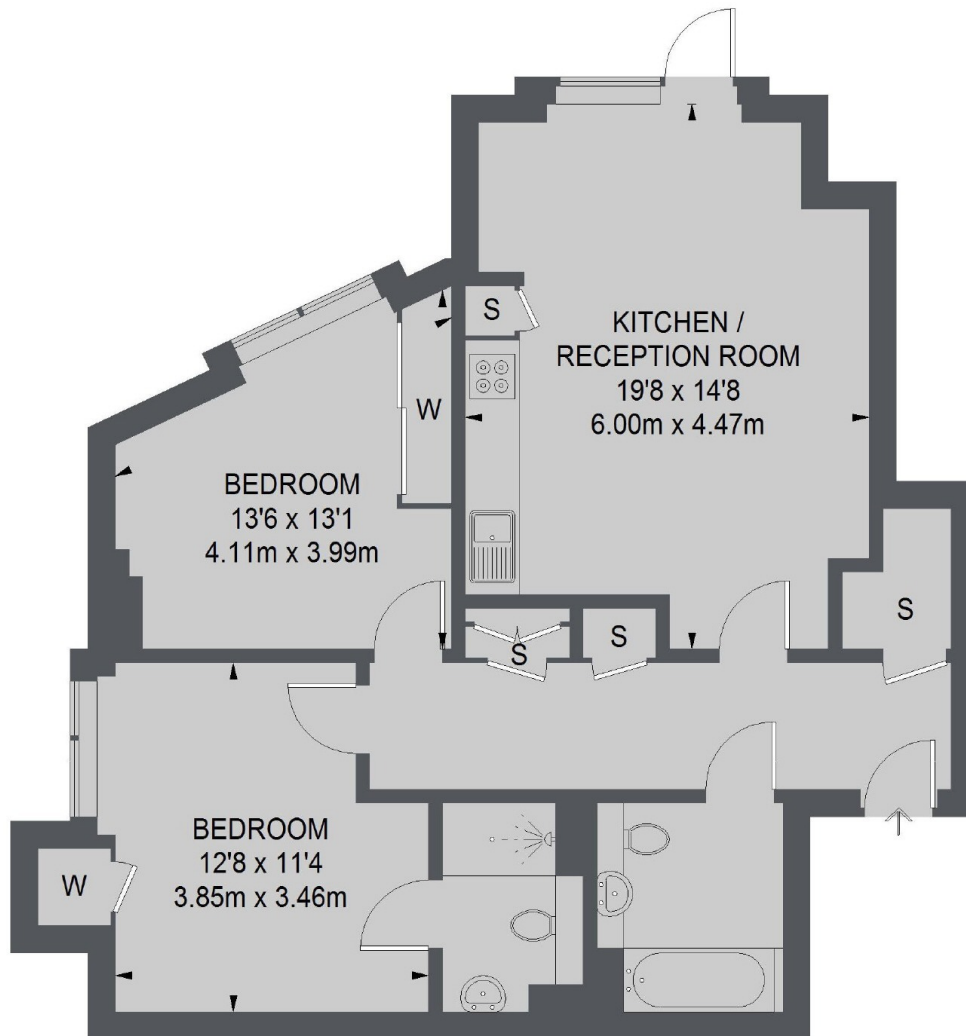
A bright two bedroom, two bathroom apartment on the ground floor of this impressive development. This spacious apartment has a private riverfacing terrace, exclusive access to residents gym, communal gardens and a 24hr concierge.

Gordian Apartment is set within the popular Enderby Wharf Development, moments from Greenwich High Street and the famous Cutty Sark.

Features

- Two Bedrooms
- Two Bathrooms
- River Facing
- Large Private Terrace
- Wooden Flooring
- Residents Gym

Cable Walk, London, SE10



GROUND FLOOR

TOTAL APPROX. FLOOR AREA
785 SQ. FT. (72.89 SQ. M.)