



Norman Road, SE10

£500,000

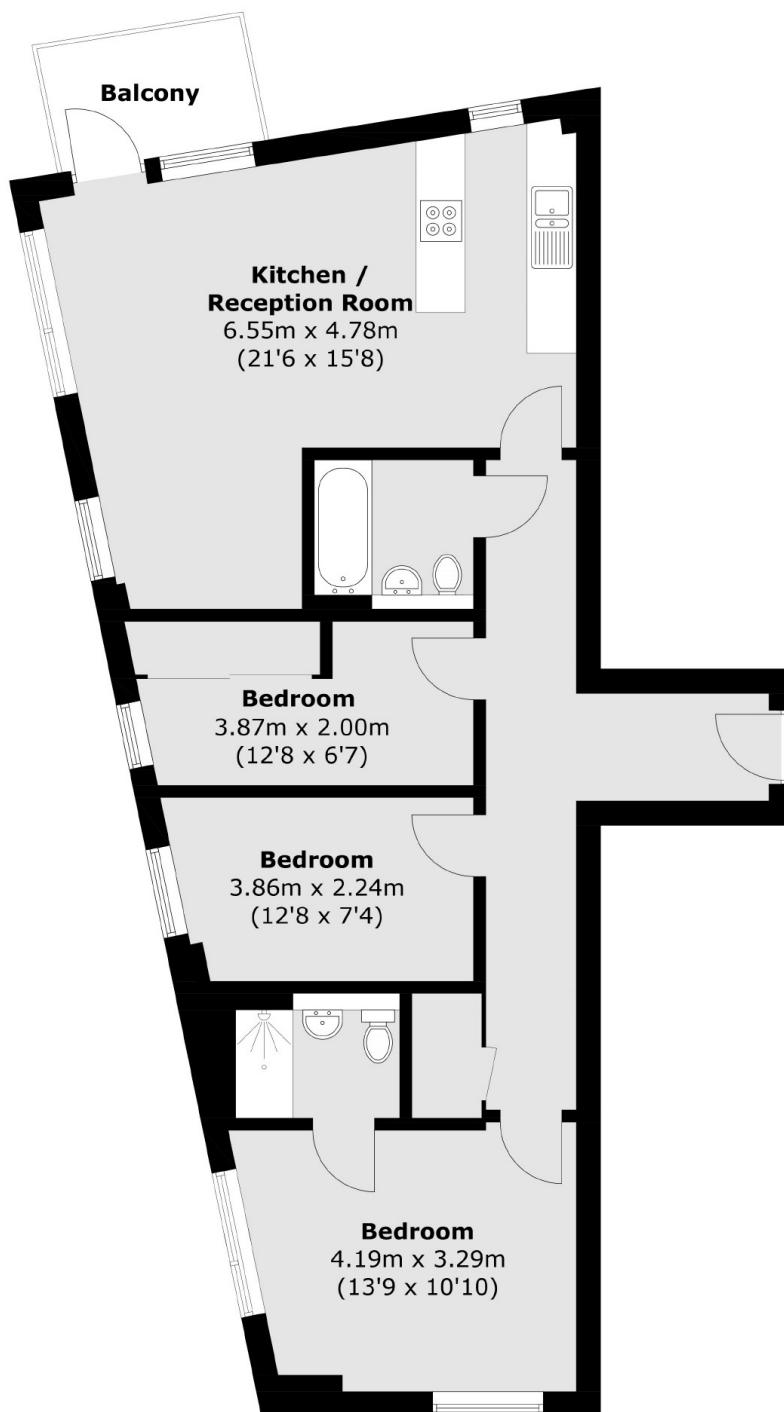
A stunning three bedroom bright and airy apartment situated on the sixth floor of this modern development in a sought after location further benefiting from two bathrooms and a private balcony.

Bellville House is part of a contemporary development strategically positioned on the corner of Norman Road and Greenwich High Road. Its prime location ensures you're literally moments away from mainline rail and DLR connections, facilitating seamless travel. Additionally, a brief stroll takes you to the vibrant Town Centre, offering an array of shops and restaurants to explore at your leisure.

Features

- Three Bedrooms
- Private Balcony
- Sought After Location
- EWS1 Compliant!
- Two Bathrooms
- Communal Roof Terrace

Norman Road,
London, SE10



Total area (approx.): 80.4 sq. m (865.4 sq. ft)
Balcony area (approx.): 3.8 sq. m (40.9 sq. ft)

Dexters

Greenwich
275 Greenwich High Road
Greenwich
London
Sales
020 8815 2215

Energy Rating: B. We aim to make our particulars both accurate and reliable. However they are not guaranteed; nor do they form part of an offer or contract. If you require clarification on any points then please contact us, especially if you're traveling some distance to view. Please note that appliances and heating systems have not been tested and therefore no warranties can be given as to their good working order.

 **RICS** | Regulated
Estate Agent
and Letting Agent

dexters.co.uk