



Devonshire Drive, SE10

£750,000

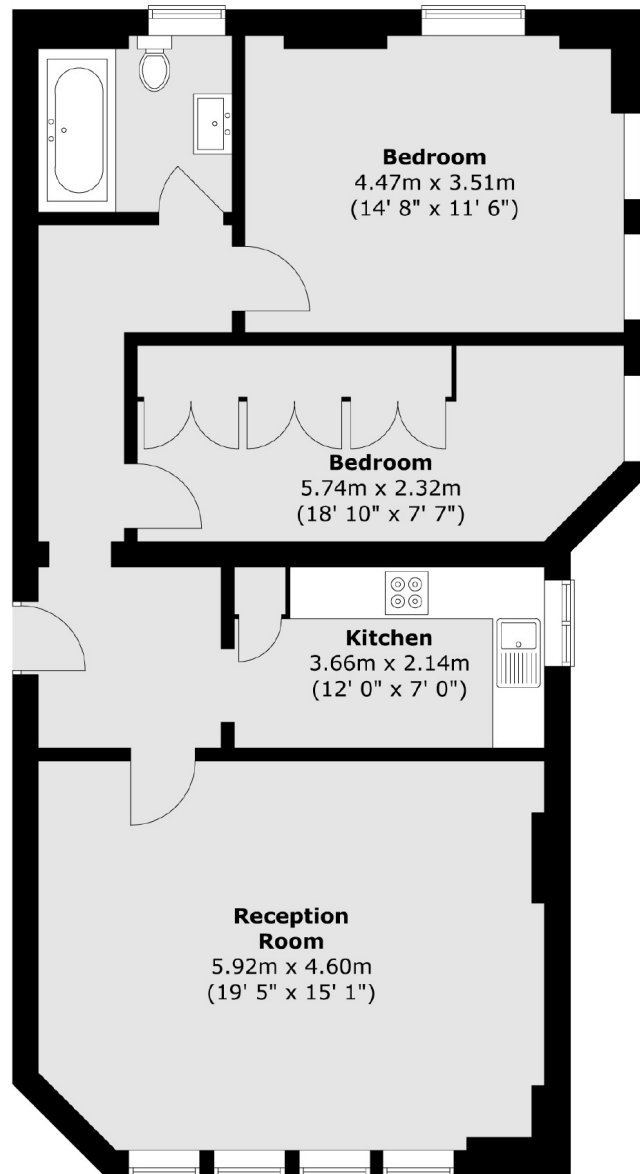
In immaculate order throughout with amazing high ceilings, A two double bedroom raised ground floor flat in a converted school house benefiting from stunning communal gardens and private gated parking. Situated in the heart of West Greenwich.

Devonshire drive is widely considered one of the best roads in West Greenwich and forms part of the hugely desirable Ashburnham Triangle. Greenwich Market is just a few moments away, offering a wide array of shops and restaurants, along with riverboat service, mainline rail, DLR and Greenwich Royal Park.

Features

Immaculate Throughout
Ashburnham Triangle
Just Under 900 sq ft
Period Property
Two Double Bedrooms
Private Gated Parking

Devonshire Drive,
London, SE10



Total area (approx.) : 83.4 sq. m (898 sq. ft)