



West Grove, SE10

£600,000

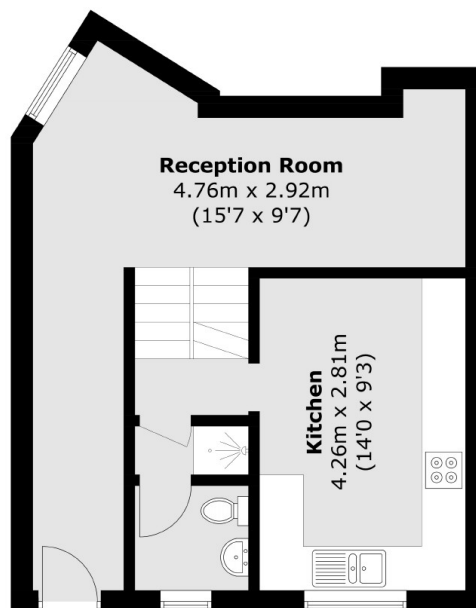
A unique two/three bedroom freehold mezzanine that is unmodernised which is a fantastic opportunity to put your own stamp on the property and further benefits from being situated in a sought after location West Greenwich.

West Grove is a quiet residential road in West Greenwich offering easy access to both Greenwich Town Centre and Blackheath Village. Greenwich Mainline and DLR Station is a short walk away offering a swift and direct commute to Canary Wharf, The City and Kings Cross. The open green spaces of Greenwich Park and Blackheath are moments away as are the area's shops, bars, restaurants and all the historical places of interest such as the National Maritime Museum, Royal Observatory and the Royal Naval College.

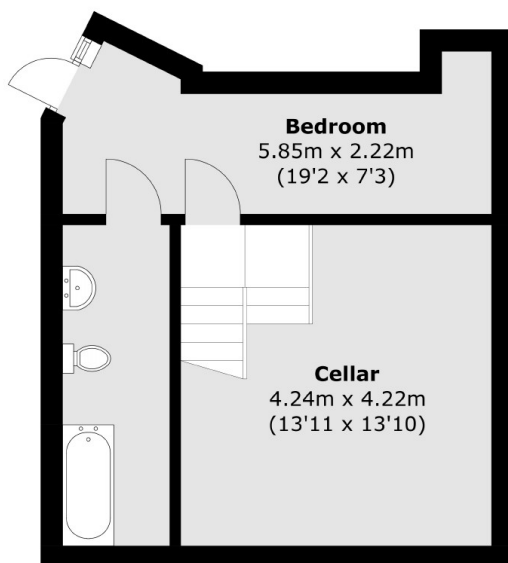
Features

Freehold
Unmodernised
Just Over 1000 sq ft
Sought After Location
Period Property
Two Bathrooms

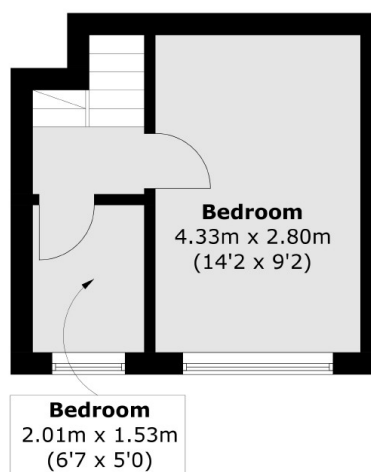
West Grove, London, SE10



Ground Floor



Basement Floor



Lower Ground Floor

Total area (approx.): 95.7 sq. m (1,030.1 sq. ft)
(Including Basement Floor)

Dexters

Greenwich
275 Greenwich High Road
Greenwich
London
Sales
020 8815 2215

Energy Rating: E. We aim to make our particulars both accurate and reliable. However they are not guaranteed; nor do they form part of an offer or contract. If you require clarification on any points then please contact us, especially if you're traveling some distance to view. Please note that appliances and heating systems have not been tested and therefore no warranties can be given as to their good working order.

 **RICS** | Regulated
Estate Agent
and Letting Agent

[dexters.co.uk](https://www.dexters.co.uk)