



Horseferry Place, SE10

£825,000

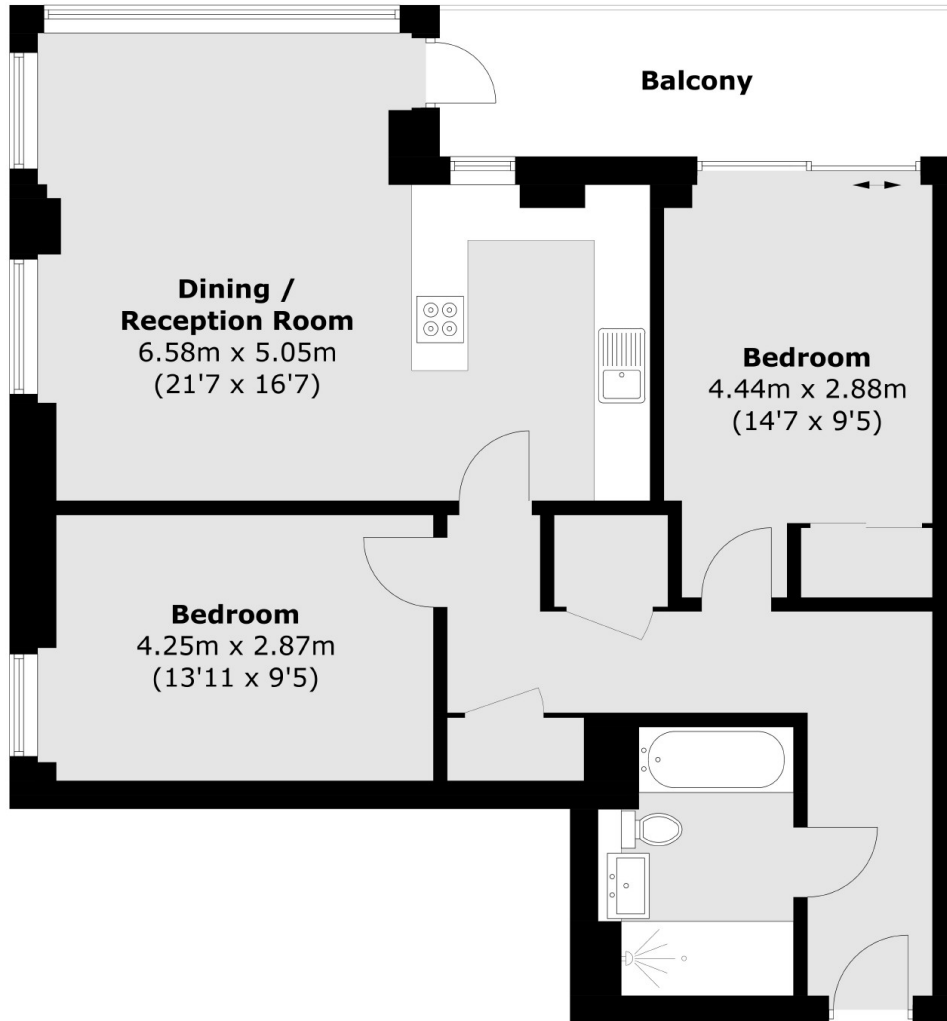
This stunning 4th floor apartment offers panoramic views across the Thames and is presented in immaculate condition. The property further benefits from an inclosed river facing balcony, two double bedrooms and a family bathroom.

Horseferry place is well located for the local amenities of West Greenwich and Greenwich High Street/Market. Situated moments away from Cutty Sark DLR station and Greenwich Mainline and DLR stations offering fast and regular links into the City, Canary Wharf, and London Bridge

Features

Two Double Bedrooms
Sought After Location
Panoramic Views
Private Balcony
4th Floor
Modern Development

Horseferry Place, London, SE10



Total area (approx.): 77.0 sq. m (828.8 sq. ft)
Balcony : 8.7 sq. m (93.6 sq. ft)

Dexters

Greenwich
275 Greenwich High Road
Greenwich
London
Sales
020 8815 2215

Energy Rating: B. We aim to make our particulars both accurate and reliable. However they are not guaranteed; nor do they form part of an offer or contract. If you require clarification on any points then please contact us, especially if you're traveling some distance to view. Please note that appliances and heating systems have not been tested and therefore no warranties can be given as to their good working order.

 **RICS** | Regulated
Estate Agent
and Letting Agent

dexters.co.uk