



Telcon Way, SE10

£575,000

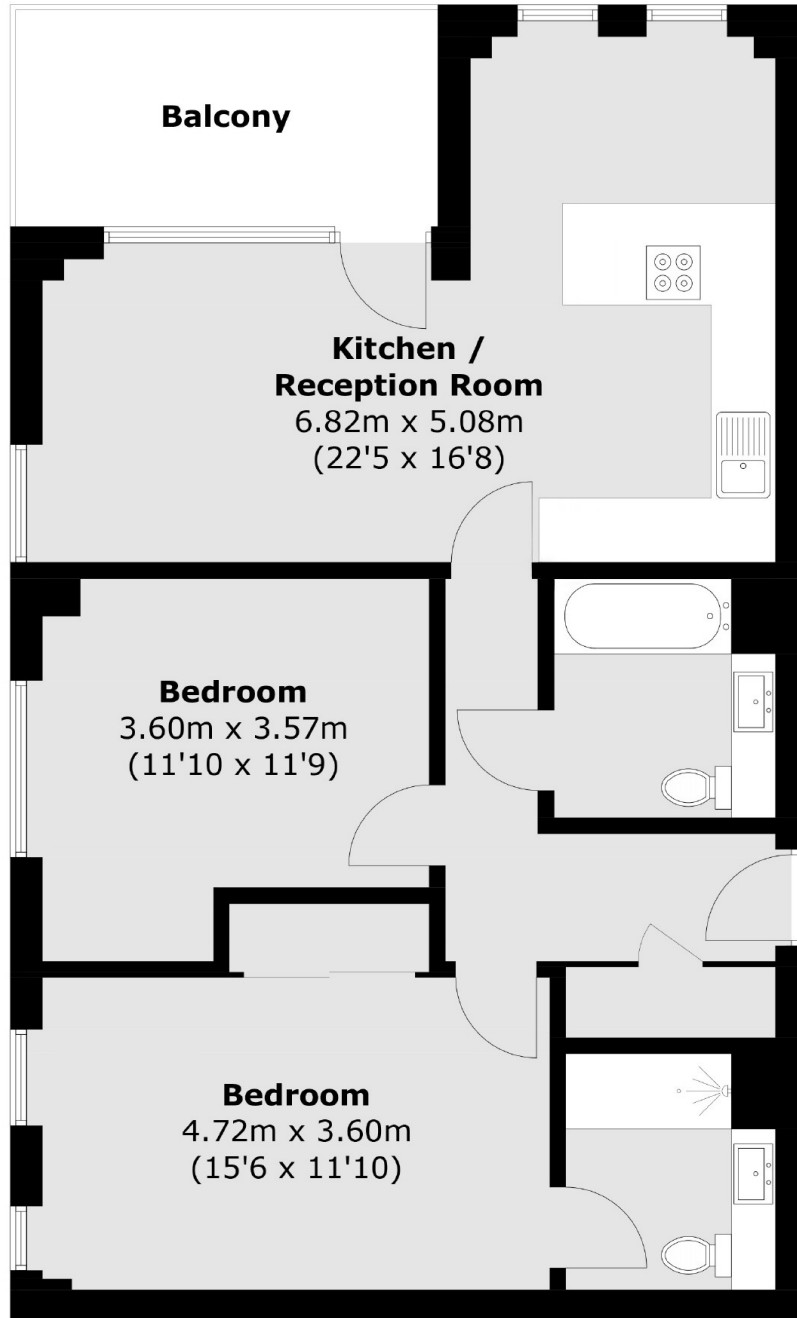
A beautiful two-bedroom, two-bathroom flat located in the highly sought-after area of East Greenwich. Benefiting from breathtaking city views and a private balcony.

Gooch House is situated just a short walk into Greenwich Village with an array of shops, restaurants, and café's together with Royal Greenwich Park. Greenwich also has excellent transports links into central London from Maze Hill mainline station, the Cutty Sark DLR, Jubilee line from North Greenwich Tube station, and the Uber boat services into Canary Wharf.

Features

- 14th Floor
- Amazing City Views
- Finished To A High Standard
- Communal Garden
- Sought After Location
- Two Bathrooms

Telcon Way,
London, SE10



Total area (approx.): 72.8 sq. m (783.6 sq. ft)
Balcony area (approx.): 7.9 sq. m (85.0 sq. ft)