



## John Harrison Way, SE10

£475,000

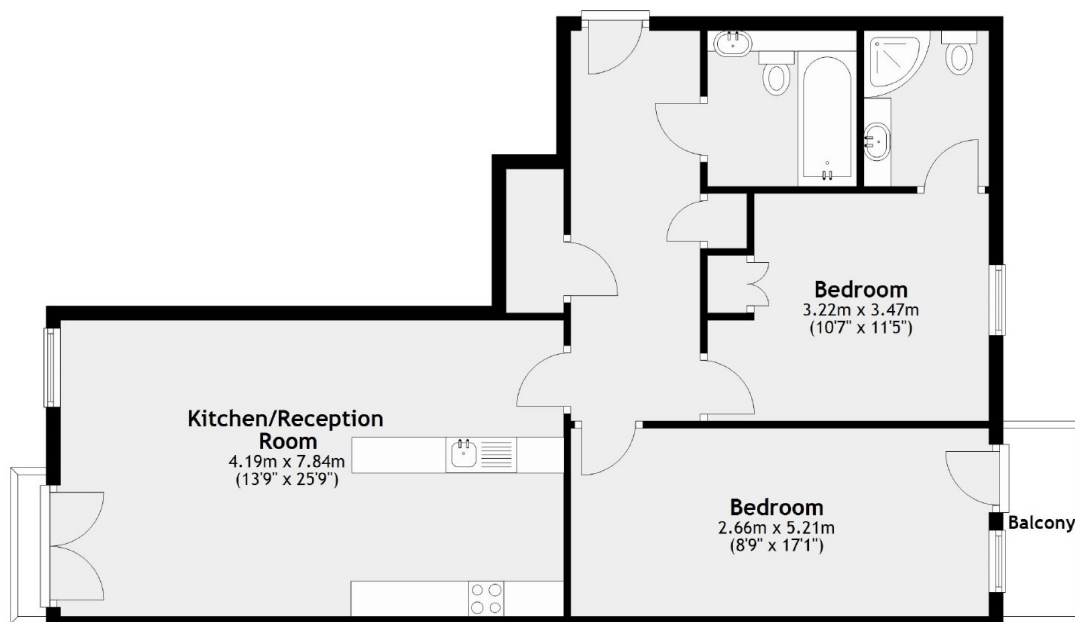
This spacious and well maintained two bedroom apartment is located in this popular development of Maurer Court in SE10. This property has an abundance of light throughout. Further benefiting from two bathrooms and a private balcony.

Maurer Court is set within the popular Greenwich Millennium Village moments from local amenities and the O2 arena. North Greenwich station on the Jubilee line is a short walk away.

### Features

- Two Bedrooms
- Two Bathrooms
- Modern
- Sought After Location
- Communal Garden
- Private Balcony

John Harrison Way,  
London, SE10



Main area: Approx. 81.0 sq. metres (872.4 sq. feet)  
Plus balconies, approx. 3.1 sq. metres (33.6 sq. feet)

**Dexters**

Greenwich  
275 Greenwich High Road  
Greenwich  
London  
Sales  
020 8815 2215

Energy Rating: B. We aim to make our particulars both accurate and reliable. However they are not guaranteed; nor do they form part of an offer or contract. If you require clarification on any points then please contact us, especially if you're traveling some distance to view. Please note that appliances and heating systems have not been tested and therefore no warranties can be given as to their good working order.

 **RICS** | Regulated  
Estate Agent  
and Letting Agent

dexters.co.uk