



Peartree Way, SE10

£553 Per week

A two bedroom apartment set in a modern development boasts a contemporary open-plan kitchen, access to a private balcony and 2 bathroom suites.

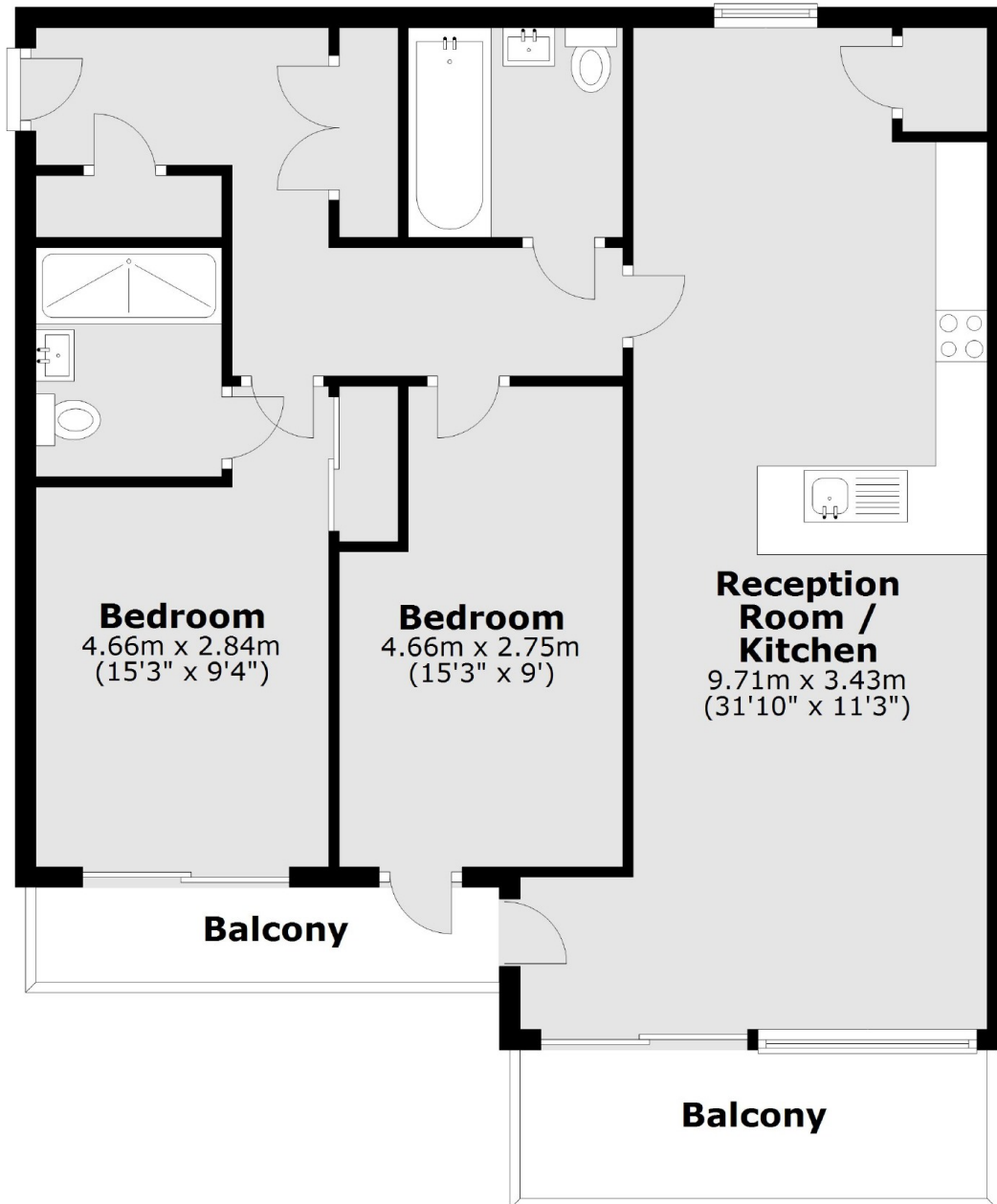
The property is situated moments from the River Thames and close to the selection of shops and eateries within Greenwich. Close to the O2 for a further range of shops and entertainment.

Features

- Furnished
- Two Bedroom
- Two Bathroom
- Open Plan Kitchen
- Two Balconies
- Close To River

**Peartree Way,
London, SE10**

Sixth Floor



Total area: approx. 82.0 sq. metres (882.9 sq. feet)