



Cutter Lane, SE10

£800,000

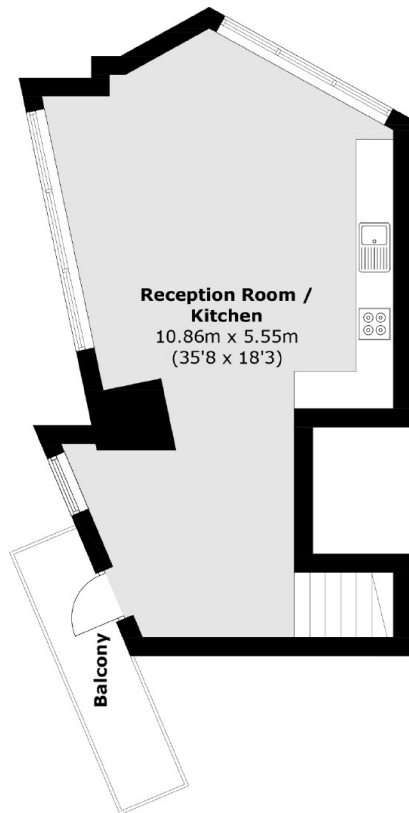
This bright and spacious Apartment has a private balcony to enjoy your serene river views. The generous accommodation features engineered wood flooring that flows throughout the hallway, kitchen and living area, full height windows, a smart 'State of Craft' fitted kitchen, bathroom and ensuite.

Located 300m from North Greenwich bus and tube station, beside North Greenwich Pier and just moments from the IFS Cloud Cable Car, transport links are readily available. Residents of No. 2 Upper Riverside also enjoy access to the 'Upper Riverside Club', offering access to a plethora of superb amenities including three gyms, 15th floor swimming pool, cinema, multimedia room.

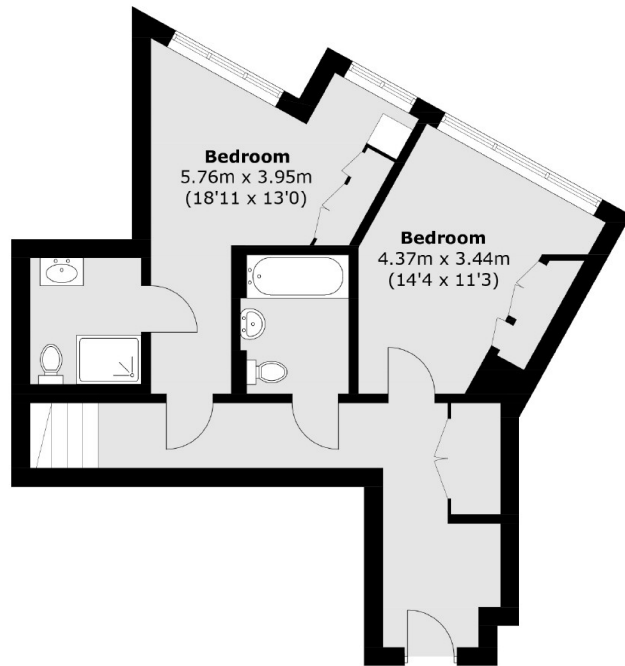
Features

- Chain Free
- Immaculate Throughout
- Two Bathrooms
- Two Double Bedrooms
- Tom Dixon Designed
- Swimming Pool

Cutter Lane,
London, SE10



Sixteenth Floor



Fifteenth Floor

Total area (approx.): 90.2 sq. m (970.9 sq. ft)
Balcony area : 4.9 sq. m (52.7 sq. ft)