



## Cutter Lane, SE10

£500,000

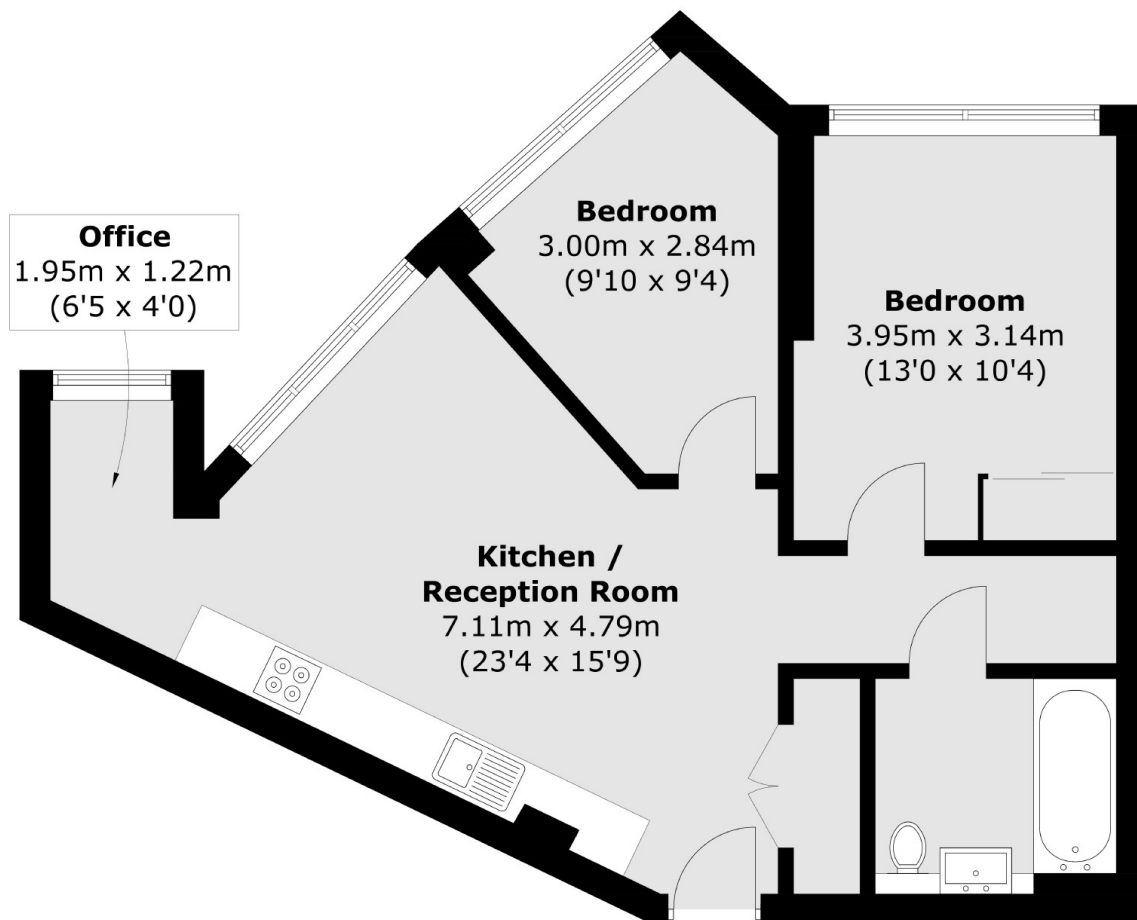
This well-presented two-bedroom apartment boasts fantastic river views and also benefits from access to a communal terrace with stunning views of London, along with residents-only swimming pool and gym facilities

Cutter Lane is perfectly located for access into the O2 and all the shops and restaurants on offer. You are also next to the Emirates Light Air and North Greenwich underground.

### Features

Spacious Two Bed Apartment  
River Views  
24Hr Concierge  
Residents Terraces & Gyms  
Swimming Pool

Cutter Lane,  
London, SE10



Total area (approx.): 58.5 sq. m (629.7 sq. ft)