



Greenwich High Road, SE10

£500,000

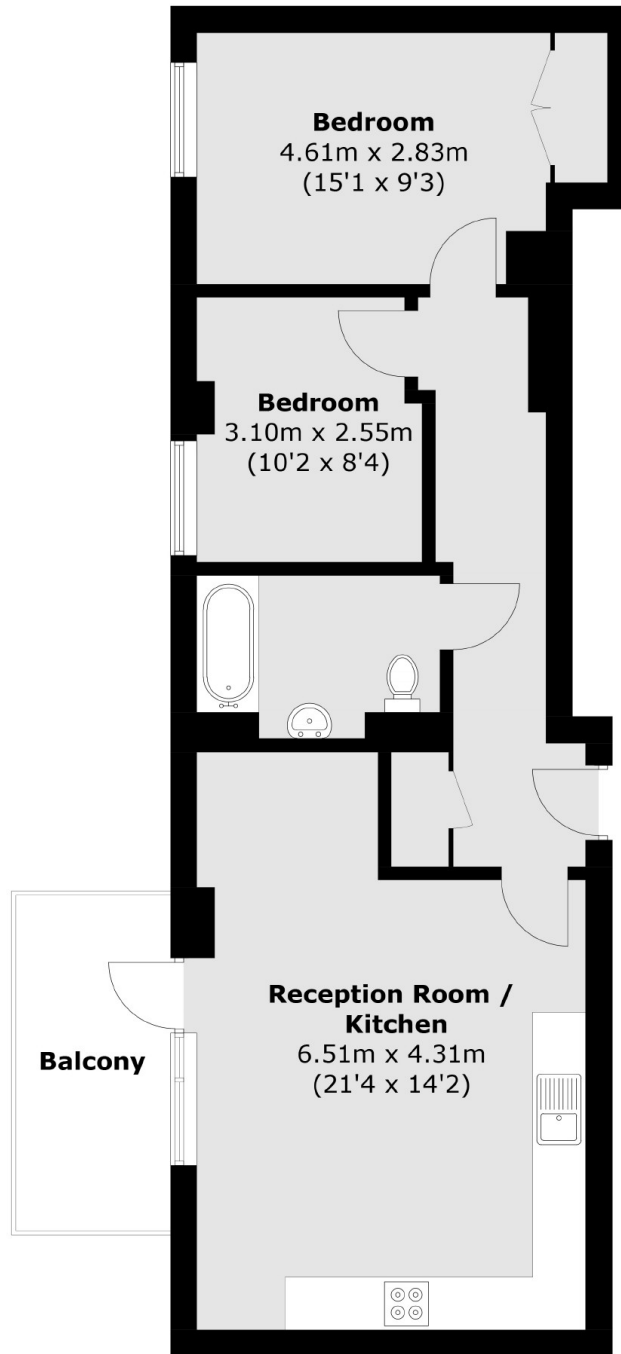
A well presented, two double bedroom modern apartment in a popular gated-development. The property also benefits from a private balcony, allocated parking and is offered chain free.

Cowan House is conveniently located at the lower end of Greenwich High Road for all the attractions Royal Greenwich has to offer, moments from both the DLR at Deptford Bridge as well as the DLR and mainline at Greenwich station; giving fast and easy access into both Canary Wharf and the City.

Features

- Two Double Bedrooms
- Sought After Location
- Modern
- Allocated Parking
- Private Balcony
- Ideal first purchase

Greenwich High Road,
London, SE10



Total area (approx.): 62.5 sq. m (672.7 sq. ft)
Balcony: 6.6 sq. m (71.0 sq. ft)