



Greenroof Way, SE10

£325,000

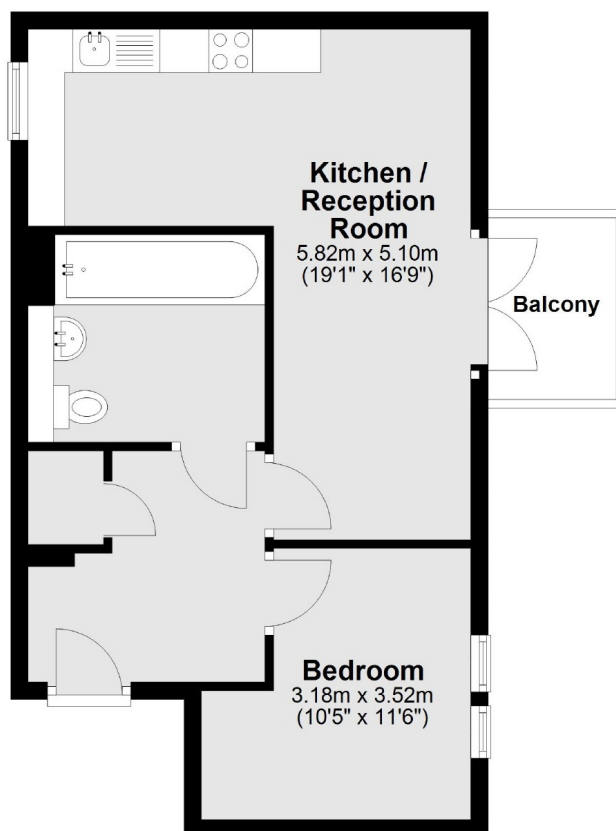
A well presented one bedroom top floor flat situated in this modern development, Further benefiting from being chain free and has a private balcony.

Located on the Greenwich Peninsula providing easy access to North Greenwich Tube Station which provides swift access to Canary Wharf, London Bridge and the West End via the Jubilee Line while the Thames Clipper provides an alternative way to commute. Nearby the O2 Arena offers an array of shops, restaurants, bars and a cinema for local residents to enjoy. The property is currently in the catchment area for the very popular and "outstanding" rated Millennium Primary School.

Features

- Top Floor Flat
- Sought After Location
- Private Balcony
- Chain Free
- Ideal First Purchase
- Modern Throughout

Greenroof Way, London, SE10



Main area: Approx. 43.3 sq. metres (466.0 sq. feet)
Plus balconies, approx. 3.3 sq. metres (35.6 sq. feet)