



Tidemill Square, SE10

£1,110,000

This luxurious three double bedroom three bathroom apartment with gorgeous views across the River Thames. Situated in this prestigious building and benefitting from a private balcony overlooking the river as well as amenities such as a gym, concierge, cinema room and communal roof terrace. Further benefitting from being situated on the sixth floor.

Greenwich Peninsula is a modern community that has been designed with the residents in mind offering a range of amenities, which include North Greenwich Station for direct connections to Canary Wharf, London Bridge and The West End.

Features

- Amazing River Views
- Three Bedrooms
- Three Bathrooms
- Immaculate Throughout
- Cinema Room
- Concierge
- Sixth Floor

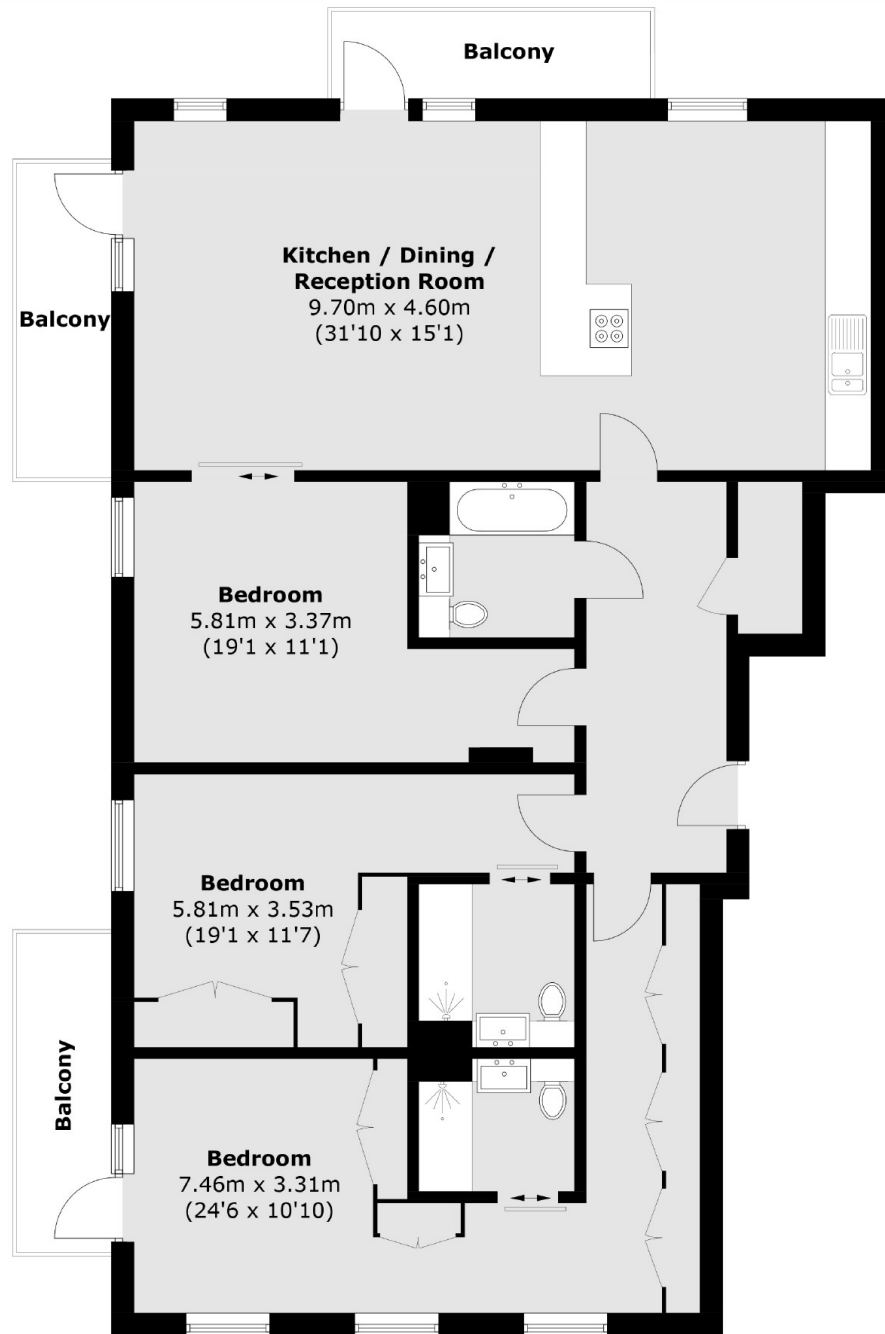


Tidemill Square, SE10

This lateral apartment measuring in excess of 1400sq feet has a fantastic layout with a central living kitchen space with views across the Thames, flanked by bedroom spaces at either wing of the apartment consisting of two bedrooms, a walk in closet and en-suite bathroom. This flat is located within the waterman garden section of waterman tower and occupies the sixth floor of the building giving you the luxurious feel of quiet, comfort and privacy.



Tidemill Square,
London, SE10



Total area (approx.) : 131.9 sq. m (1,419.8 sq. ft)
Balcony : 15.3 sq. m (164.7 sq. ft)