



Woolwich Road, SE10

£500,000

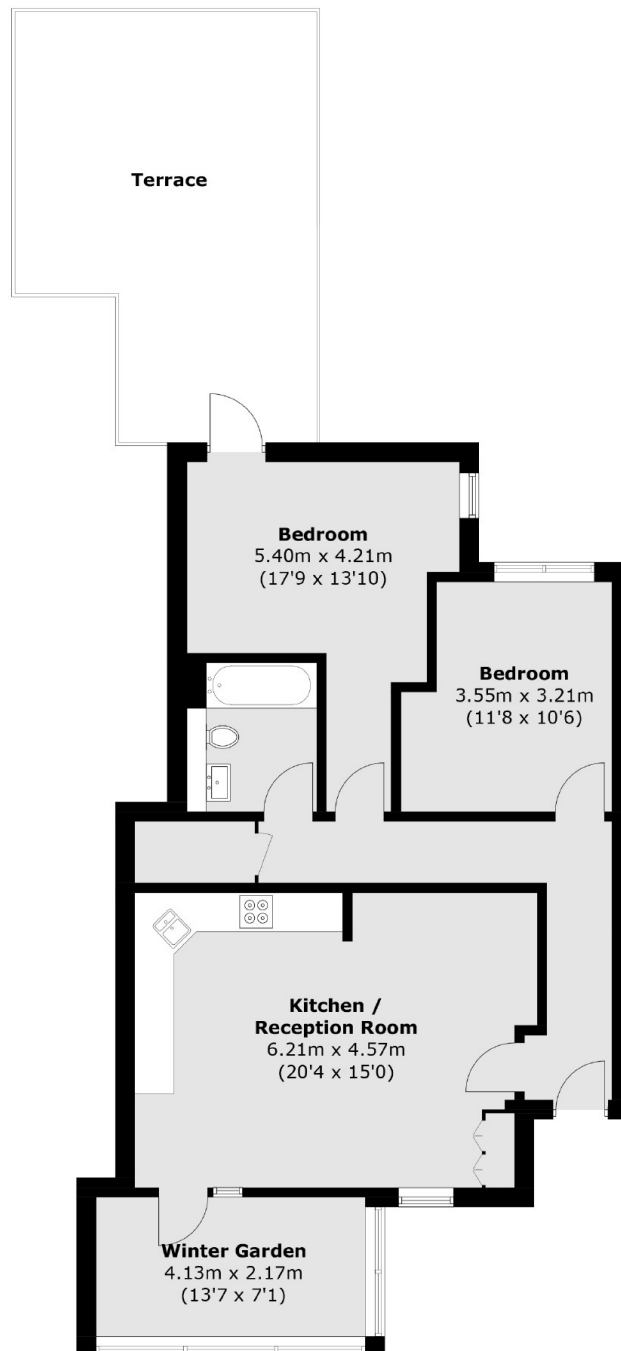
Guide Price £500,000-£550,000. We are delighted to offer this stunning two-bedroom, 3rd floor penthouse apartment situated in this popular small development that features a large private terrace with wonderful views for entertaining, measuring 30 square metres. EWS1 COMPLIANT!

This property is well located, very close to local shops and just a short walk to the centre of Greenwich and the Royal Park with Observatory. It is excellently located close to the Westcombe Hill station and the Jubilee line at North Greenwich station, as is the o2 arena.

Features

- Over 80 Sq. Metres
- Two Double Bedrooms
- Close To Westcombe Park Station
- 30 sq m Panoramic Terrace
- Leasehold

Woolwich Road,
London, SE10



Total area (approx.): 81.2 sq. m (874.0 sq. ft)
Terrace : 27.2 sq. m (292.8 sq. ft)

Dexters

Greenwich
275 Greenwich High Road
Greenwich
London
Sales
020 8815 2215

Energy Rating: C. We aim to make our particulars both accurate and reliable. However they are not guaranteed; nor do they form part of an offer or contract. If you require clarification on any points then please contact us, especially if you're traveling some distance to view. Please note that appliances and heating systems have not been tested and therefore no warranties can be given as to their good working order.

 **RICS** | Regulated
Estate Agent
and Letting Agent

dexters.co.uk