



## West Grove, SE10

£850,000

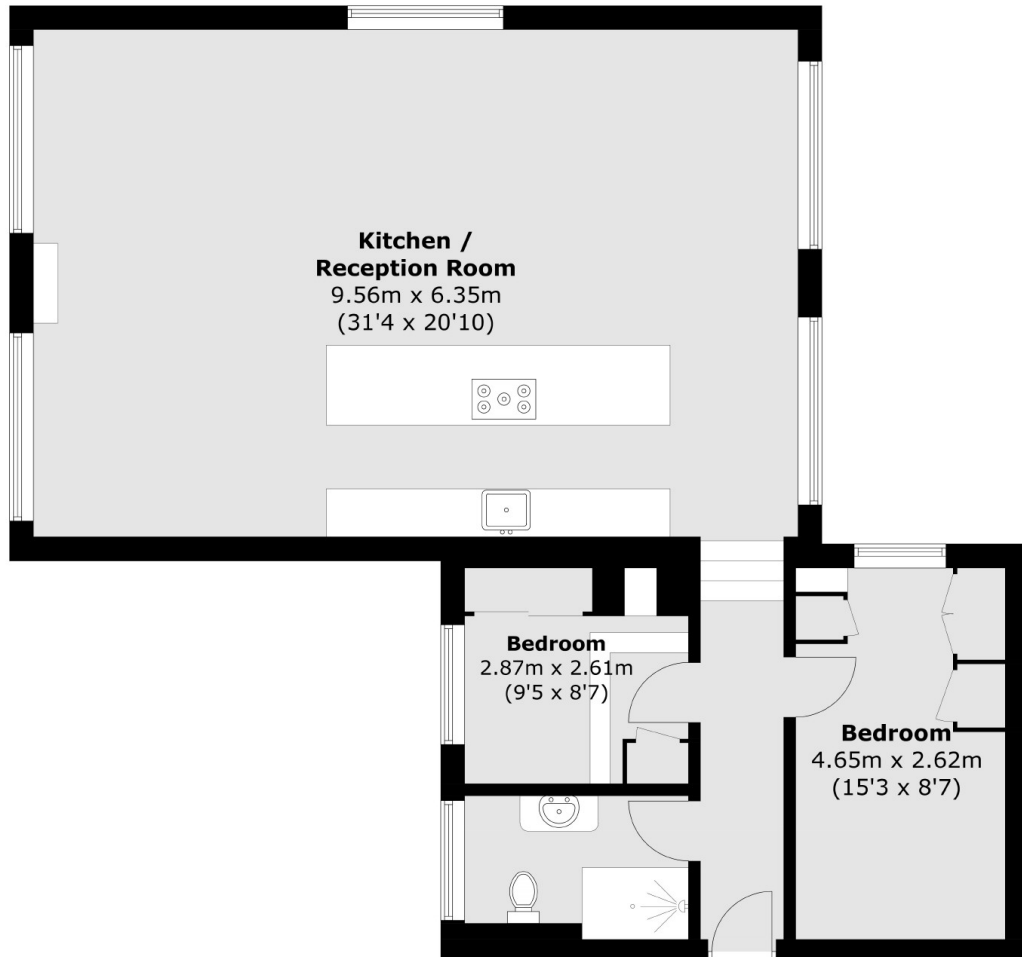
This phenomenal apartment occupies a portion of the top floor of a significant Grade II\* listed building. Presented in immaculate order throughout. Comprising a open plan reception room with a vast kitchen/dining room, two bedrooms, one bathroom and a large landscaped communal garden. This property is positioned on West Grove, an ancient lane in the heart of Greenwich.

Located within a short walk from the open expanses of Greenwich Park and Blackheath and a short walk from the centre of Greenwich. This unique old town, famous for its maritime history, has an excellent selection of restaurants, pubs and shops, as well as a Greenwich Picturehouse cinema and a theatre. The Old Royal Naval College, designed by Sir Christopher Wren in the 18th century, hosts a popular programme of events in the gardens, including concerts, an open-air theatre and a jazz festival.

### Features

- Two Bedrooms
- Grade II Listed
- Immaculate Throughout
- Period Features Throughout
- Sought After Location
- Wonderful Communal Gardens
- Dual Aspect Views

West Grove,  
London, SE10



Total area (approx.): 93.9 sq. m (1,010.7 sq. ft)