



Cofferdam Way, SE8

£693 Per week

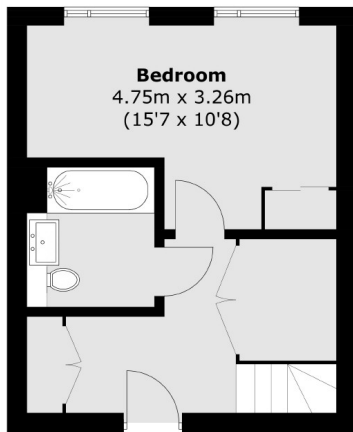
A beautifully presented duplex penthouse apartment in the ever popular Deckhouse Court. This well presented property comes with three double bedrooms, two bathrooms, a large private terrace and is furnished. Only suitable for a family, two sharers or a single applicant.

Amazing location close to the River Thames, Greenwich Park, the Cutty Sark and Greenwich Village for all local shops, bars and restaurants.

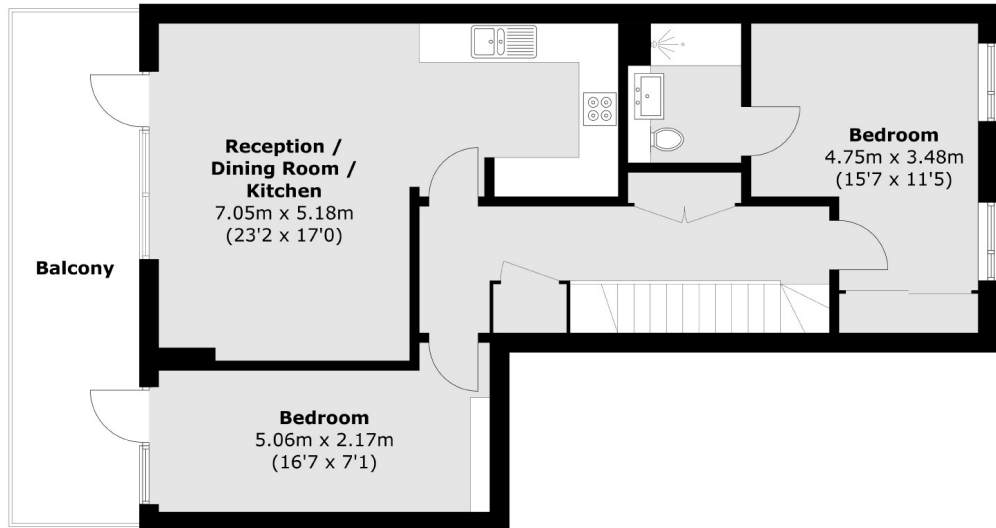
Features

- Duplex Over Two Floors
- Two Bathrooms
- Furnished
- Concierge
- Not Suitable for 3 Sharers
- Gym

Cofferdam Way, London, SE8



Fifth Floor



Sixth Floor

Total area (approx.): 103.1 sq. m (1,109.7 sq. ft)
Balcony area (approx.): 15.3 sq. m (164.7 sq. ft)