



## Mauritius Road, SE10

£650,000

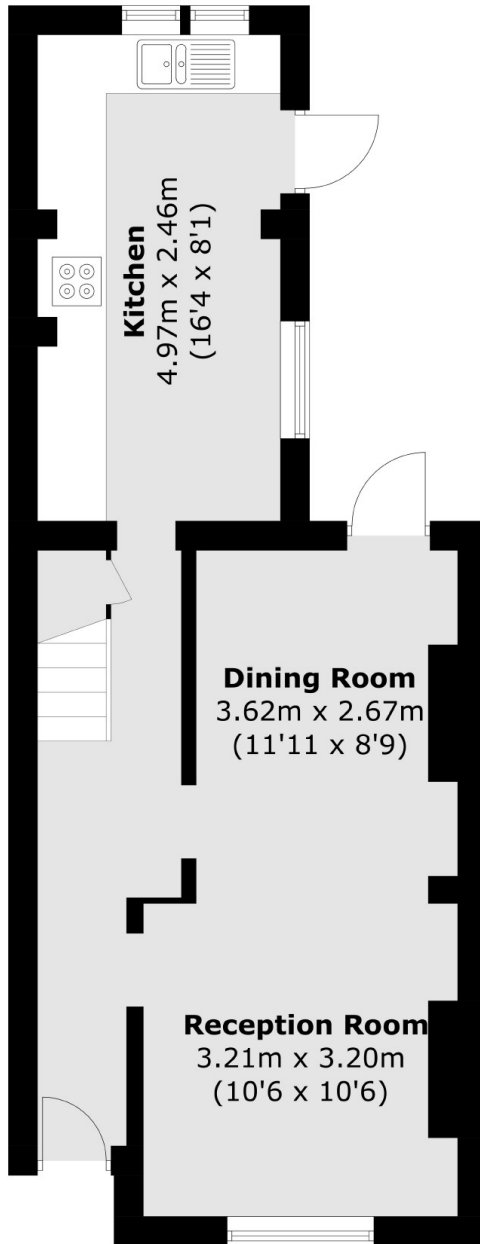
A charming two double bedroom Victorian cottage in a sought after location which is situated on a residential no through road making this a quiet location, two minutes walk to the River Thames path.

Mauritius road is a quiet residential street, North Greenwich tube station, Maze Hill mainline station and Greenwich's Royal park are a short walking distancing, the immediate area there is a choice of supermarkets, river front pubs and many more shops.

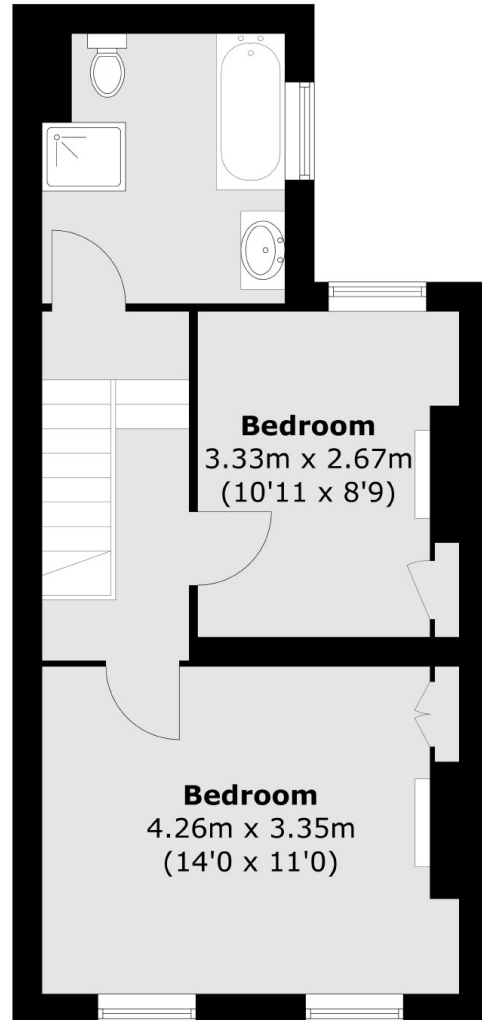
### Features

- Period Home
- Two Double Bedrooms
- No Work Required
- Sought After Location
- Chain Free
- Potential To Extend STPP

Mauritius Road,  
London, SE10



**First Floor**



**Second Floor**

Total area (approx.): 78.7 sq. m (847.1 sq. ft)