



## Peartree Way, SE10

£825,000

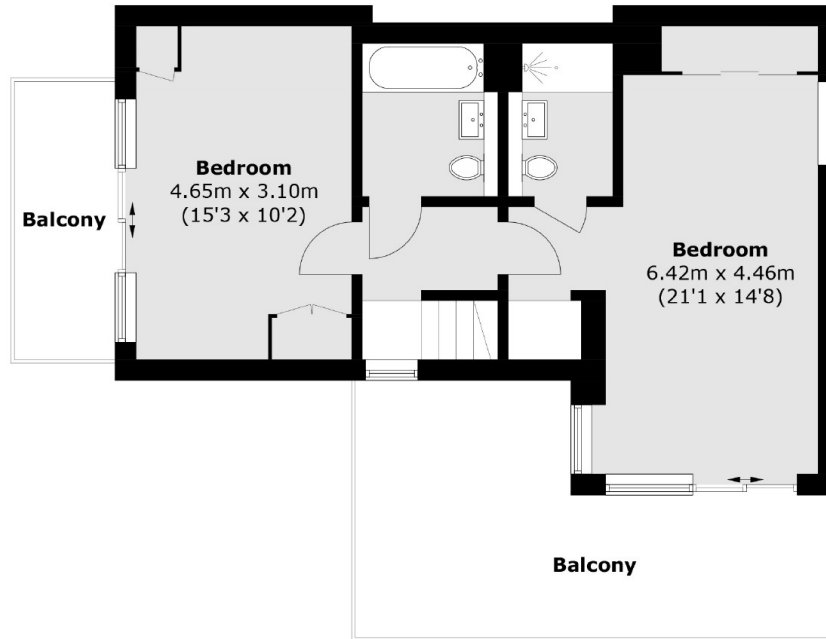
This immaculately presented three bedroom penthouse apartment is located in Greenwich Millennium Village. The apartment is arranged over two floors which has a bright living space with floor to ceiling windows and a spacious private balcony and a private roof terrace, offering exceptional panoramic views of Canary Wharf, fully integrated kitchen, dining area, storage cupboards and three bathrooms.

North Greenwich tube station (Jubilee line) is located 0.9 miles away, providing easy access to Canary Wharf, City Airport, the City and Stratford. Emirates Cable Car, The O2, North Greenwich pier and local retail park together with supermarkets such as Sainsbury's, Marks and Spencer and Ikea are also within easy reach. The outstanding rated Millennium Primary school is in the catchment area of the property.

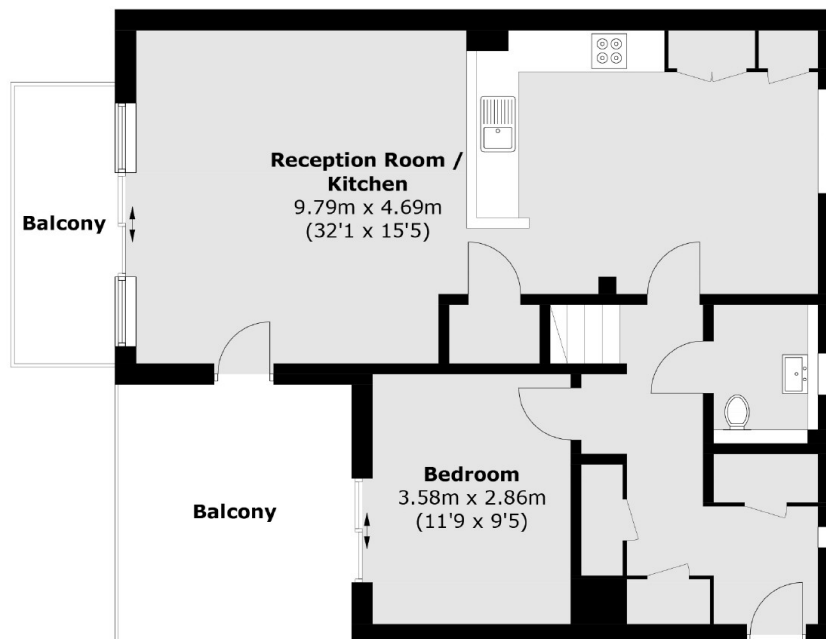
### Features

- Chain Free
- Private Terrace
- Private Balcony
- Private Parking Space
- Three Bathrooms
- Split Level Apartment
- City Views

Peartree Way,  
London, SE10



**Tenth Floor**



**Ninth Floor**

Total area (approx.): 123.3 sq. m (1,327.2 sq. ft)  
Balcony Area (approx.): 43.2 sq. m (465.0 sq. ft)