



## Telcon Way, SE10

£400,000

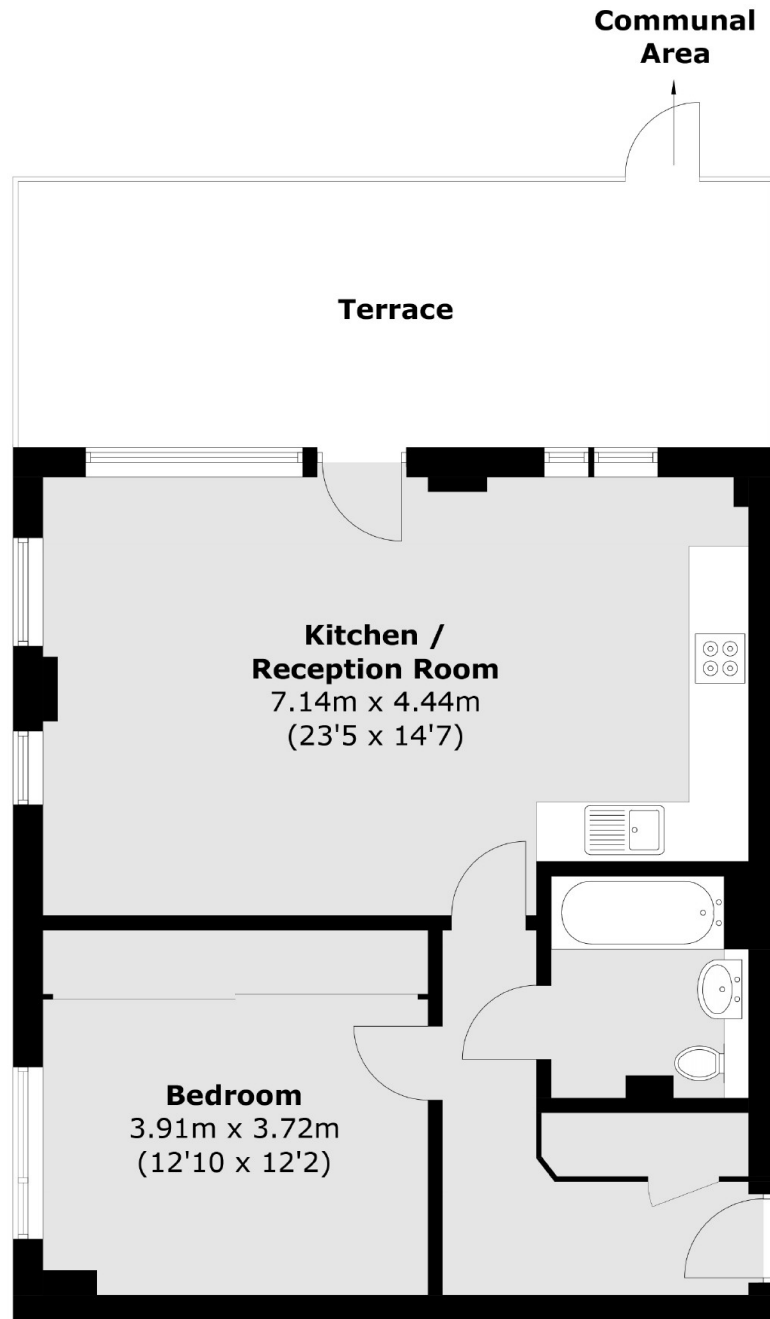
A superb one bedroom first floor apartment that is perfectly located in this modern development, just moments from the river, which further benefits from EWS1 COMPLIANT and has been finished to a high standard, sellers are chain free.

Gooch house is a stunning development located on the cusp of north and east Greenwich, and as mentioned just moments from the river walk. This means it is perfectly located for quick and easy access to the town centre, which offers a wide array of shops and restaurants, and also the O2 arena with cable car service. Mainline rail, DLR and riverboat are a short walk away, as is the Royal Park with its Observatory, and close to the Jubilee Line at North Greenwich Station.

### Features

Immaculate Throughout  
Large Private Balcony  
Sought After Location  
One Bedroom  
EWS1 COMPLIANT  
Close To Amenities

Telcon Way,  
London, SE10



Total area (approx.): 59.6 sq. m (641.5 sq. ft)  
Terrace : 20.6 sq. m (221.7 sq. ft)

**Dexters**

Greenwich  
275 Greenwich High Road  
Greenwich  
London  
Sales  
020 8815 2215

Energy Rating: B. We aim to make our particulars both accurate and reliable. However they are not guaranteed; nor do they form part of an offer or contract. If you require clarification on any points then please contact us, especially if you're traveling some distance to view. Please note that appliances and heating systems have not been tested and therefore no warranties can be given as to their good working order.

 **RICS** | Regulated  
Estate Agent  
and Letting Agent

dexters.co.uk