



Randall Place, SE10

£700,000

A well presented two bedroom Victorian cottage in a sought after location has been finished to a good standard and has potential to extend at the rear. The property is offered to the market chain free.

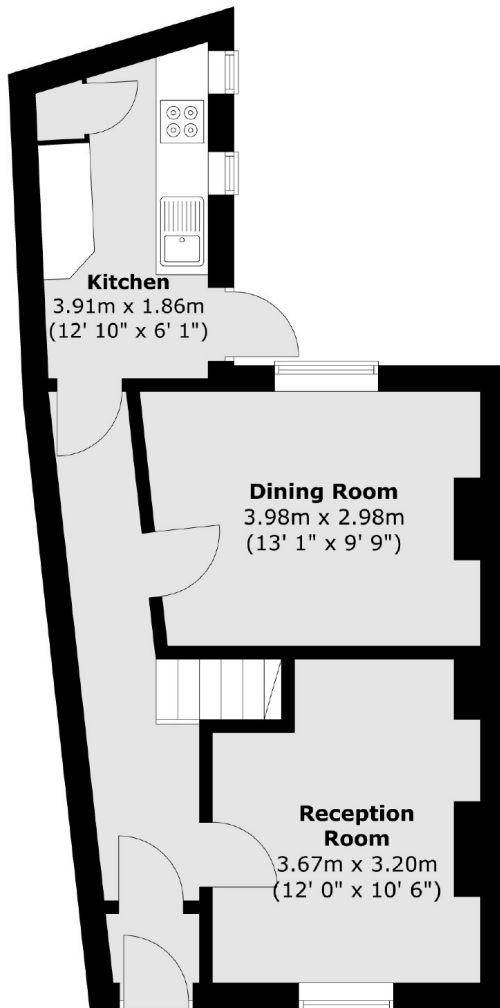
Located in the heart of Greenwich for independent shops, bars and restaurants, Greenwich Mainline and DLR Station is a short walk away providing direct connections to Canary Wharf, Bank, London Bridge, Cannon Street and Kings Cross. While the Greenwich Park and Greenwich Market are both within easy reach.

Features

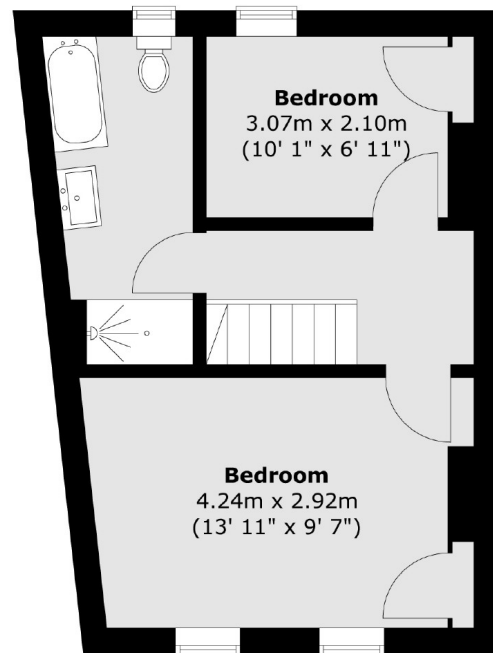
Two Bedrooms
Sought After Location
Chain Free
Period
Original Features
Potential To Extend STPP

Randall Place, London, SE10

Ground Floor



First Floor



Total area (approx.) : 70.9 sq. m (763 sq. ft)