



## Renaissance Walk, SE10

£350,000

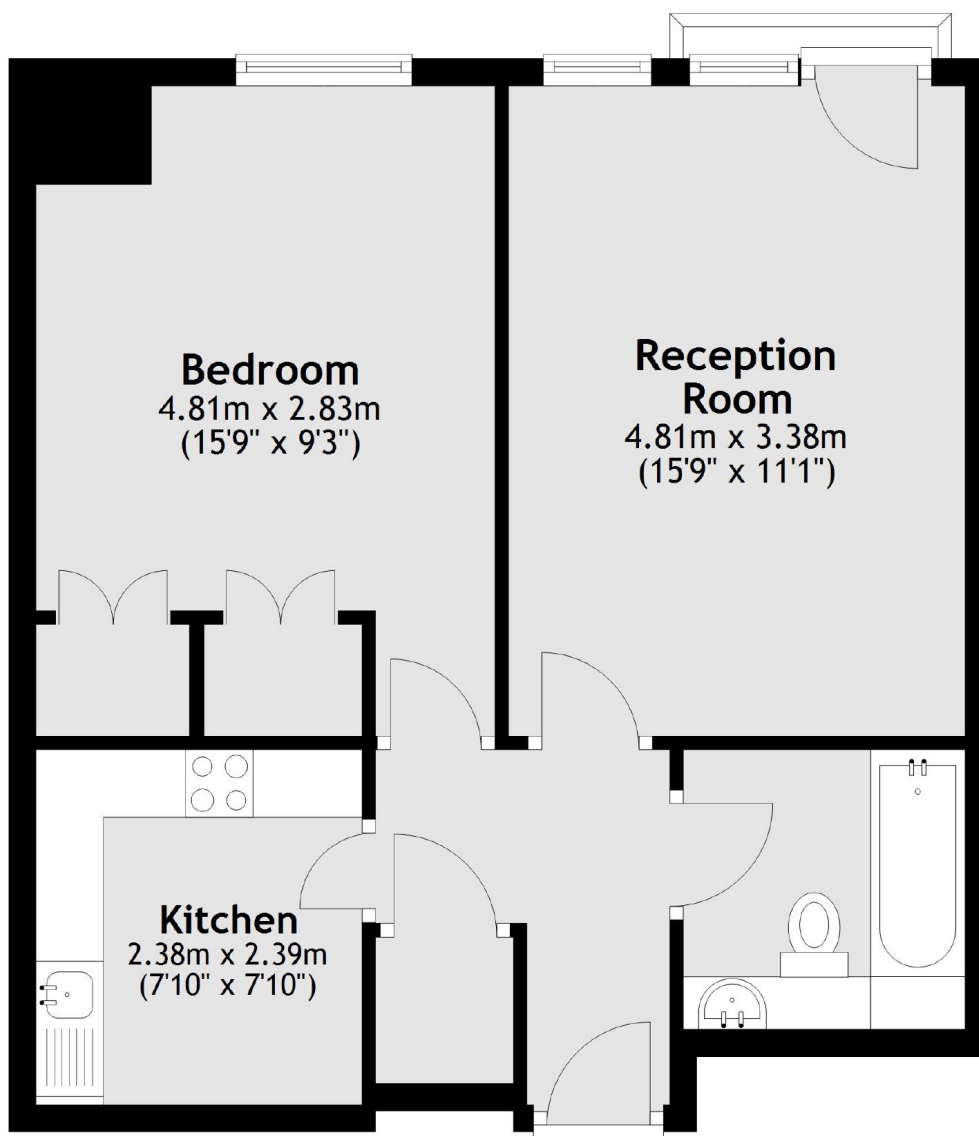
A modern one bedroom purpose built apartment situated in Greenwich Millennium Village which overlooks the tranquil lake. This property further benefits from being chain free and has a private parking space which comes with the property.

This property benefits from a close proximity to North Greenwich Station for frequent Jubilee Line services into central London. The wealth of amenities found in Greenwich Village are also easily accessible.

### Features

- Sought After Location
- Chain Free
- One Double Bedroom
- Modern
- Juliet Balcony
- Concierge Facilities
- Private Parking

Renaissance Walk,  
London, SE10



Total area: approx. 50.4 sq. metres (542.6 sq. feet)