



River Gardens Walk, SE10

£800,000

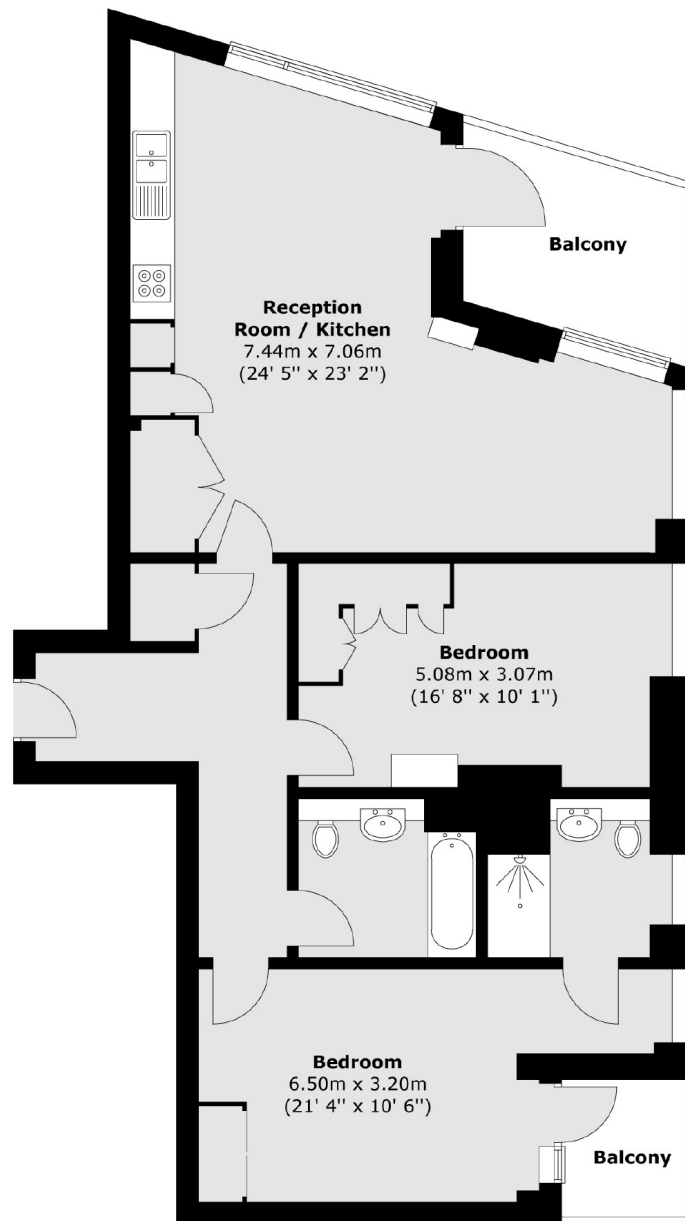
A beautifully presented two bedroom, two bathroom apartment which is situated in a sought after location. The development offers a 24 hour concierge and also access to private leisure facilities, which include a swimming pool, gymnasium, tennis court and gardens within the grounds and further benefits from a parking space.

The River Gardens development is located on the banks of the Thames and has a fantastic community feel with the beautiful Greenwich Park, Thames Pathway, University of Greenwich, the Old Naval College, National Maritime Museum, Royal Observatory, listed buildings and pubs of Greenwich town, and Greenwich Market. Maze Hill Rail Station is a short walk away and allows for a 13-15 minute journey into London Bridge station, the Cutty Sark DLR provides a direct link to Canary Wharf (Jubilee and Elizabeth Line) and Bank, while the North Greenwich Jubilee line and O2 Arena are easily accessible.

Features

- Two Bedrooms
- Private Balcony
- Private Gym
- Tennis Courts
- Residents Swimming Pool
- Amazing City & River Views

River Gardens Walk, London, SE10



Total area (approx.) : 95.6 sq. m (1029 sq. ft)
Total balcony area (approx.) : 9.5 sq. m (102 sq. ft)