



Greenwich South Street, SE10 £1,100,000

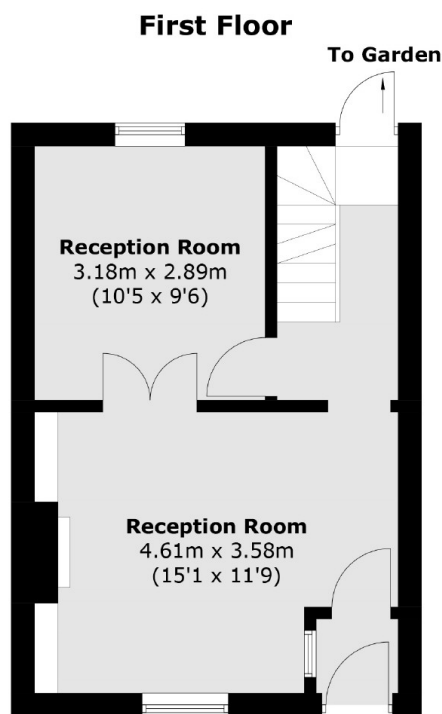
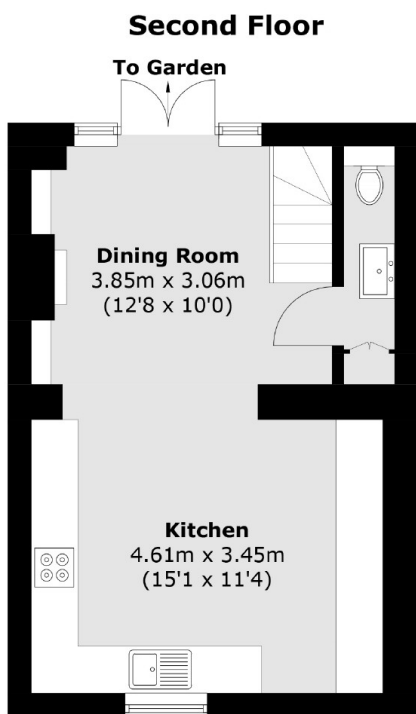
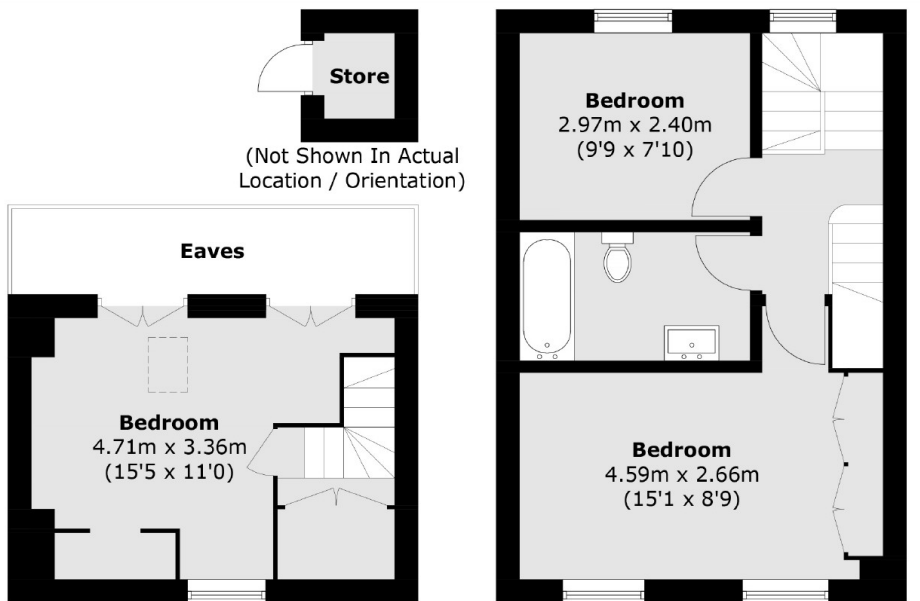
An impressive three double bedroom Victorian family home in sought after location and a great sized garden which has been finished to a great standard.

Greenwich South Street is located in West Greenwich and offers a quick commute to Canary Wharf, London Bridge, Cannon Street, and Kings Cross via the Greenwich Mainline and DLR Station. Greenwich Park and Greenwich Market are a short walk away and offer a variety of local stores, restaurants, and bars for residents to enjoy.

Features

- Three Bedrooms
- Victorian Freehold House
- Over 1200sq Feet
- Renovated
- Sought After Location
- Close To Greenwich Station

Greenwich South Street, London, SE10



Lower Ground Floor

Total area (approx.): 113.9 sq. m (1,225.9 sq. ft)
(Excluding Eaves)

Store (approx.): 1.1 sq. m (11.8 sq. ft)

Ground Floor