



Reminder Lane, SE10

£575,000

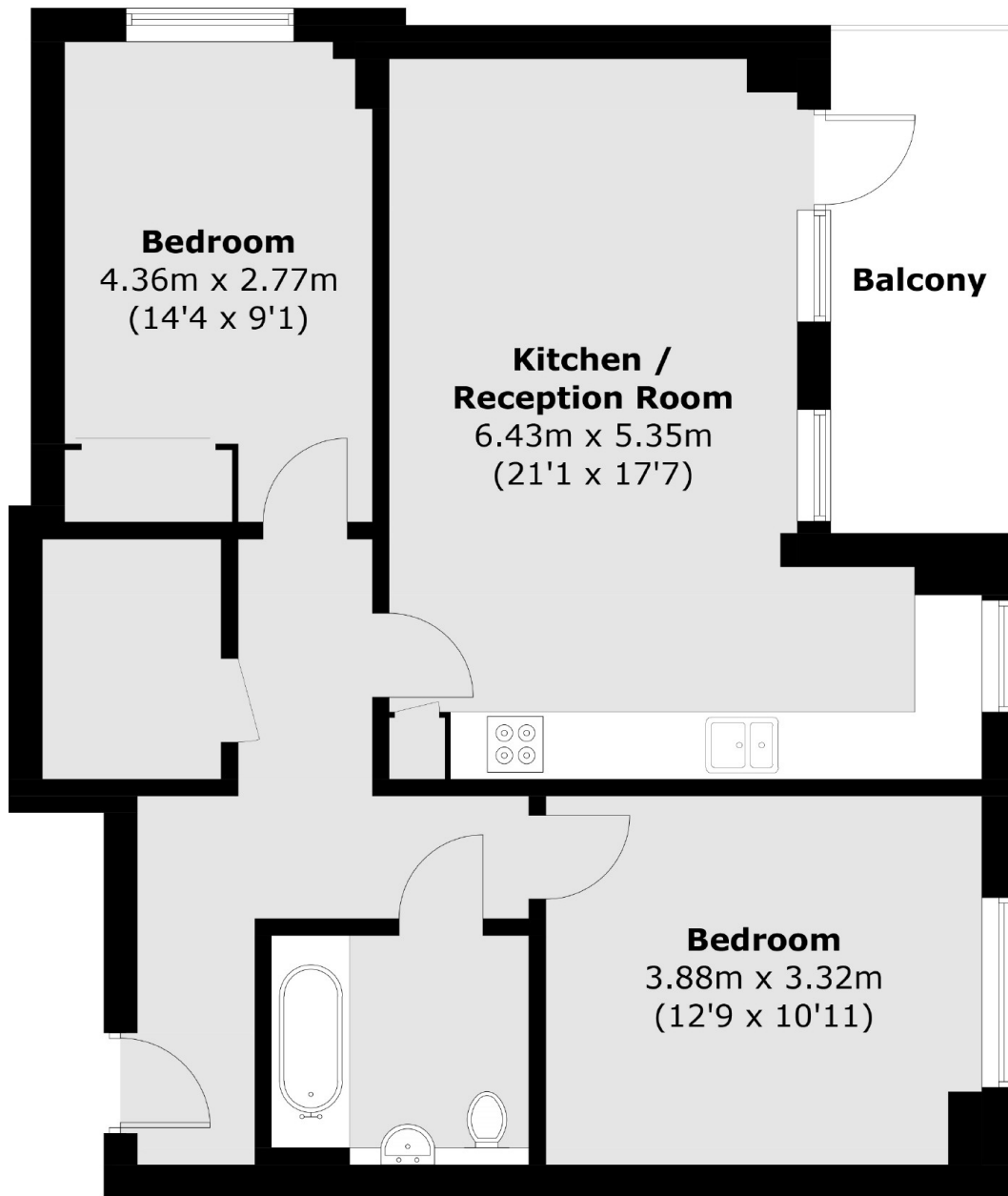
An amazing two bedroom apartment situated in this prestigious building overlooking the River Thames, the property comprises of an open plan kitchen/dining/lounge, two double bedrooms and bathroom off the hallway, the property offers panoramic views across the Thames.

Greenwich Peninsula is a modern community that has been designed with the residents in mind offering a range of amenities, which include North Greenwich Station for direct connections to Canary Wharf, London Bridge and The West End. The O2 arena which offers an array of bars and restaurants to enjoy as well as a cinema and retail outlet centre.

Features

- Two Bedrooms
- River Views
- Private Balcony
- Sought After Location
- Modern
- Chain Free

Reminder Lane,
London, SE10



Total area (approx.): 72.5 sq. m (780.4 sq. ft)
Balcony: 7.2 sq. m (77.5 sq. ft)