



Blackheath Hill, SE10

£525,000

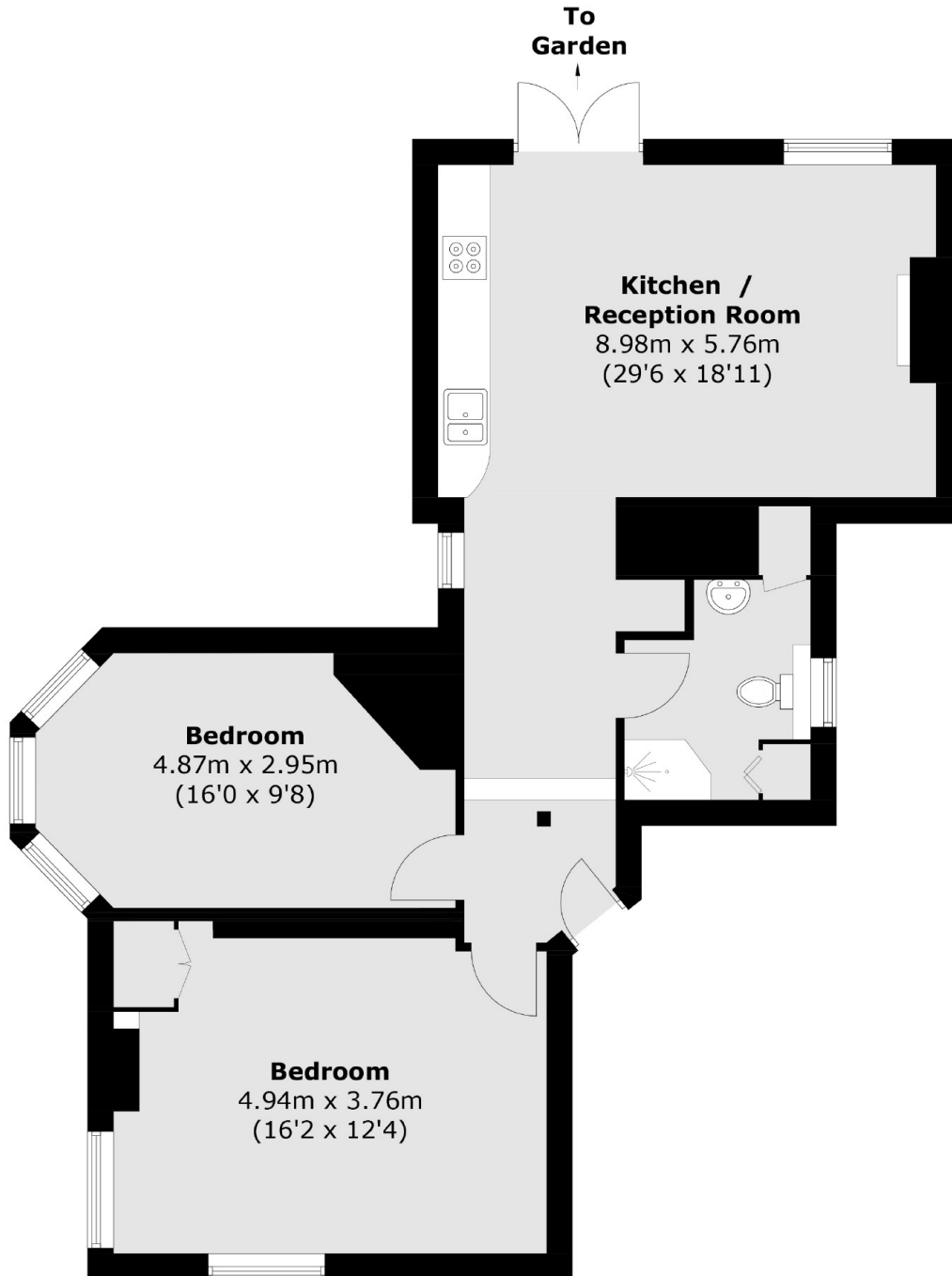
This beautifully renovated period flat is presented in immaculate condition, measuring in at over 770sq feet, benefiting from a share of freehold, two double bedrooms modern family bathroom and stunning open plan kitchen dining space with period style doors leading out to communal outside space.

Ideally located for the amenities of Blackheath and Greenwich this apartment is well served by transport links in Greenwich and transport links are plentiful, with Greenwich Railway and DLR Stations nearby offering quick and easy access directly to The City and Canary Wharf. For those who prefer alternative modes of transport, there is the river boat taxi, various bus routes, and main roads that provide maximum convenience for any journey.

Features

Two Bedrooms
Fully Renovated
Share of Freehold
Period Conversion
779Sq Feet
Close To Greenwich Station

Blackheath Hill,
London, SE10



Total area (approx.): 72.4 sq. m (779.3 sq. ft)