



## Straightsmouth, SE10

£1,250,000

This impressive three bedroom Georgian family in a sought after location has been finished to a great standard with period features throughout.

Located in the heart of Greenwich for independent shops, bars and restaurants, Greenwich Mainline and DLR Station is a short walk away providing direct connections to Canary Wharf, Bank, London Bridge, Cannon Street and Kings Cross. While the Greenwich Park and Greenwich Market are both within easy reach.

### Features

Period Features Throughout  
Finished To A High Standard  
Sought After Location  
Period Family Home  
Three Double Bedrooms  
No Work Required





## Straightsmouth, SE10

Upon entering the property, you are greeted with an abundance of living/entertaining space which is complimented by many of the original period features including a fireplace and sash windows.

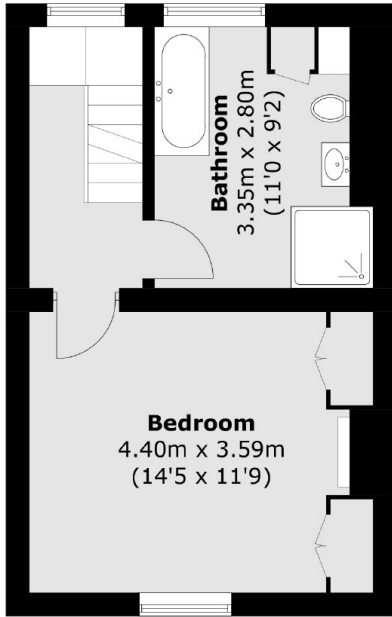
The showpiece for this family house is the impressive renovated kitchen dining space which benefits from an abundance of natural light.

The versatile layout still in its original form, spread out over four floors encompassing three bedrooms, two receptions and one family bathroom and a downstairs W.C. And further benefiting from a great size garden.

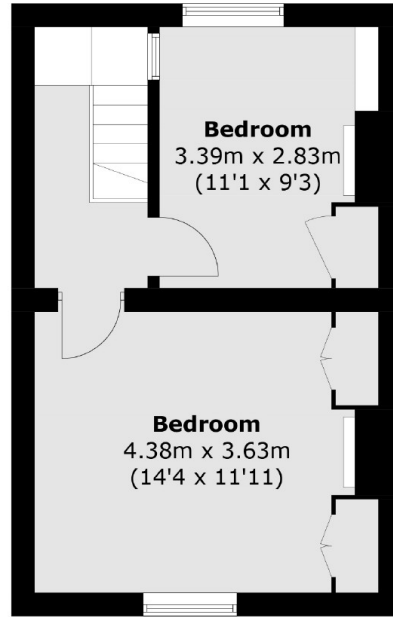




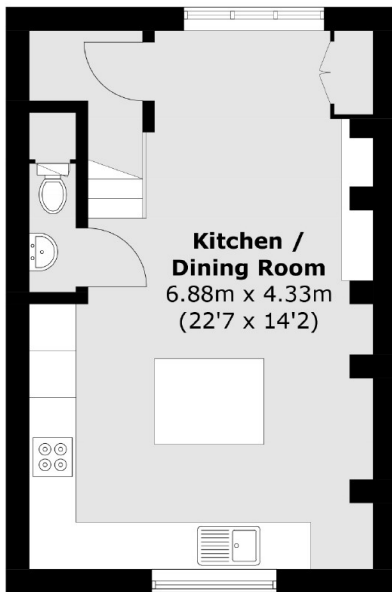
# Straightsmouth, London, SE10



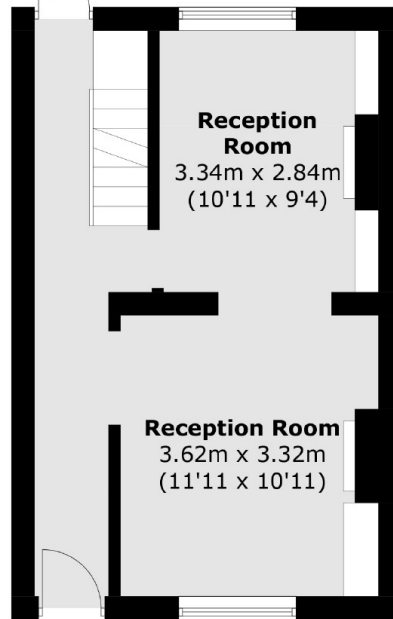
**First Floor**



To Garden **Second Floor**



**Lower Ground Floor**



**Ground Floor**

Total area (approx.): 126.3 sq. m (1,359.5 sq. ft)