



Clayton Mews, SE10

£1,150,000

This well presented three bedroom semi-detached house is nestled away in a quiet cul-de-sac just off of Hyde Vale, with off street parking good proportion rooms and potential to extend STPP.

Clayton mews is just off of Hyde Vale which is a sweeping road in West Greenwich within easy reach of all of Greenwich's shops, bars and restaurants as well as the historical places of interest such as the National Maritime Museum, Royal Observatory and the Royal Naval College. It's a short walk from both Cutty Sark and Greenwich DLR stations as well as the Mainline Rail Station at Greenwich giving fast and convenient access into Canary Wharf and the City.

Features

- Semi-Detached
- Off Street Parking
- Two Bathrooms
- Sought After Location
- Generous Reception Room
- Side Access

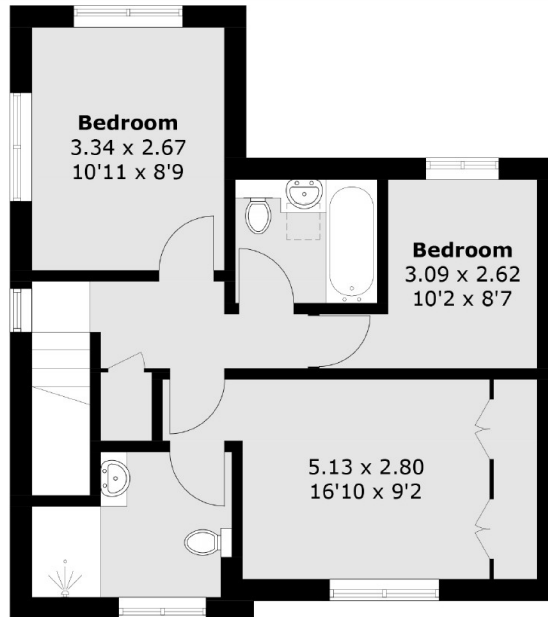


Clayton Mews, SE10

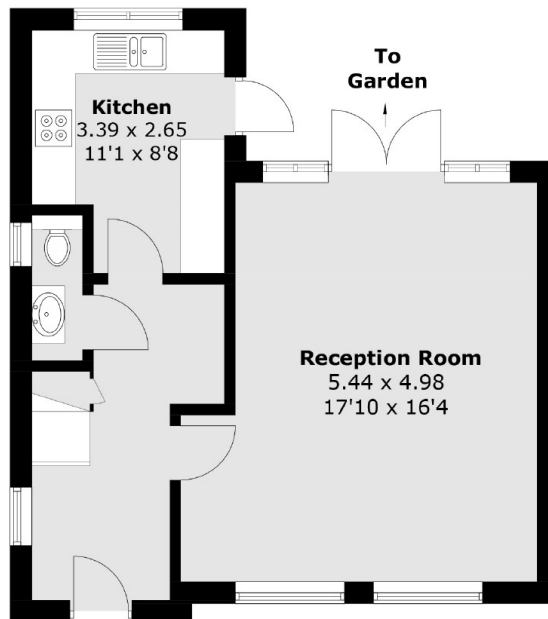
The ground floor opens up into a well sized hallway which grants access to the generous living room offering access to the rear garden as well as a downstairs W/C and smart fitted kitchen on the first floor you will find two double bedrooms as well as a third bedroom and a well size family bathroom. The master bedroom has fitted wardrobes and a en-suite.



Clayton Mews, London, SE10



First Floor



Ground Floor

Total area (approx.): 89.1 sq. m (959.0 sq. ft)