



Earlswood Street, SE10

£675,000

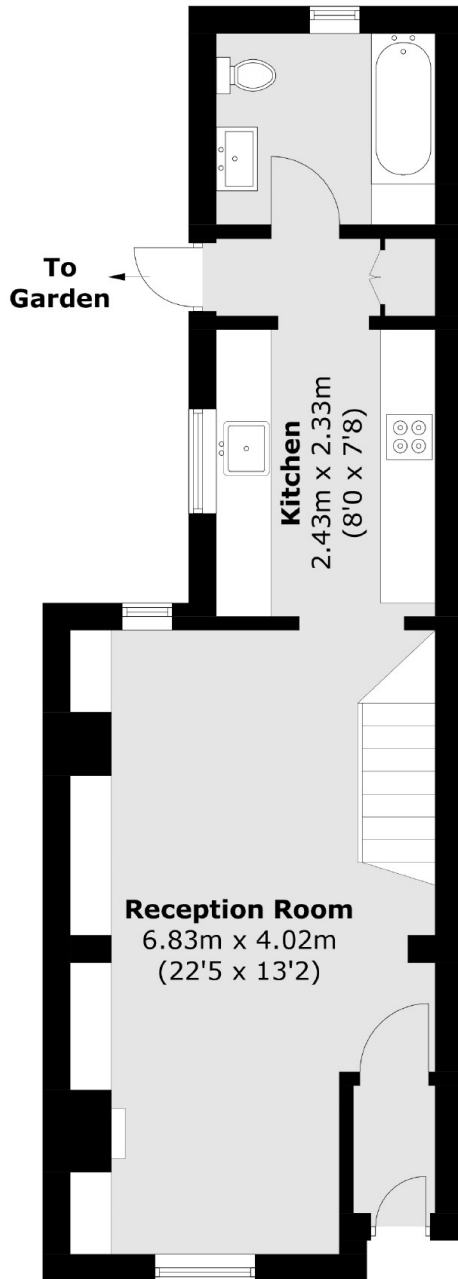
A two double bedroom, Victorian mid terrace family home. Located on a desirable residential street in East Greenwich and further benefits from potential to extend at the rear STPP, with ample storage and residents parking.

Earlswood Street is a quiet residential cul-de-sac located moments from Maze Hill Mainline Station providing direct links to London Bridge, Cannon Street and Kings Cross. The open green spaces of Greenwich Park are located a short walk away as are the many historical attractions of Greenwich including the National Maritime Museum, Royal Observatory and the Royal Naval College.

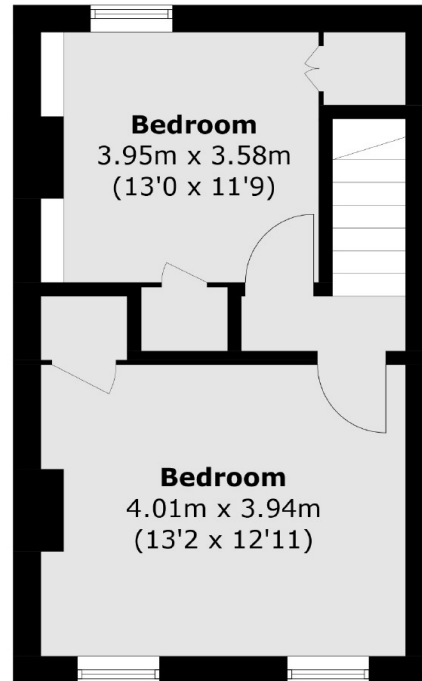
Features

- Freehold
- Finished To A High Standard
- Two Double Bedrooms
- Sought After Location
- Chain Free
- No Work Required

Earlswood Street,
London, SE10



Ground Floor



First Floor

Total area (approx.): 70.2 sq. m (755.6 sq. ft)