



Peartree Way, SE10

£600,000

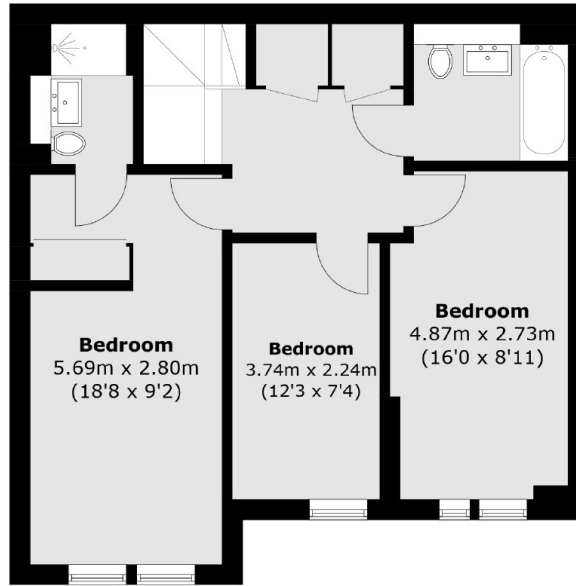
An immaculately presented three bedroom, two bathroom, split level maisonette in sought after location which benefits from a private parking space.

The apartment is located within walking distance of the O2 which hosts a wide selection of bars, restaurants and cinema, The Emirates cable car is also nearby. North Greenwich tube station provides links to Canary Wharf and London Bridge. Charlton and Westcombe Park overground. Greenwich Millennium Village features an abundance of landscaped green areas and riverside walkways. The development has a health centre, primary school and local shopping facilities. Retail outlets as well as the local shopping facilities. There are excellent transport links with easy access onto the A102, A2 and A13.

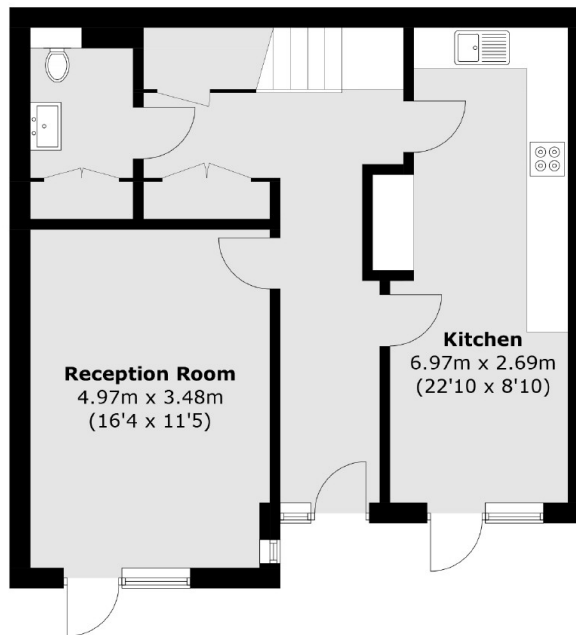
Features

Split Level Maisonette
Sought After Location
Private Parking
Three bedrooms
Two Bathrooms
Downstairs W.C.

Peartree Way,
London, SE10



First Floor



Ground Floor

Total area (approx.): 115.3 sq. m (1,241.1 sq. ft)