



Cofferdam Way, SE8

£375,000

A Modern and spacious one bedroom first floor apartment with a large open plan kitchen dining space, modern bathroom, double bedroom and private balcony off the living room with access to a residents concierge, gym and rooftop garden.

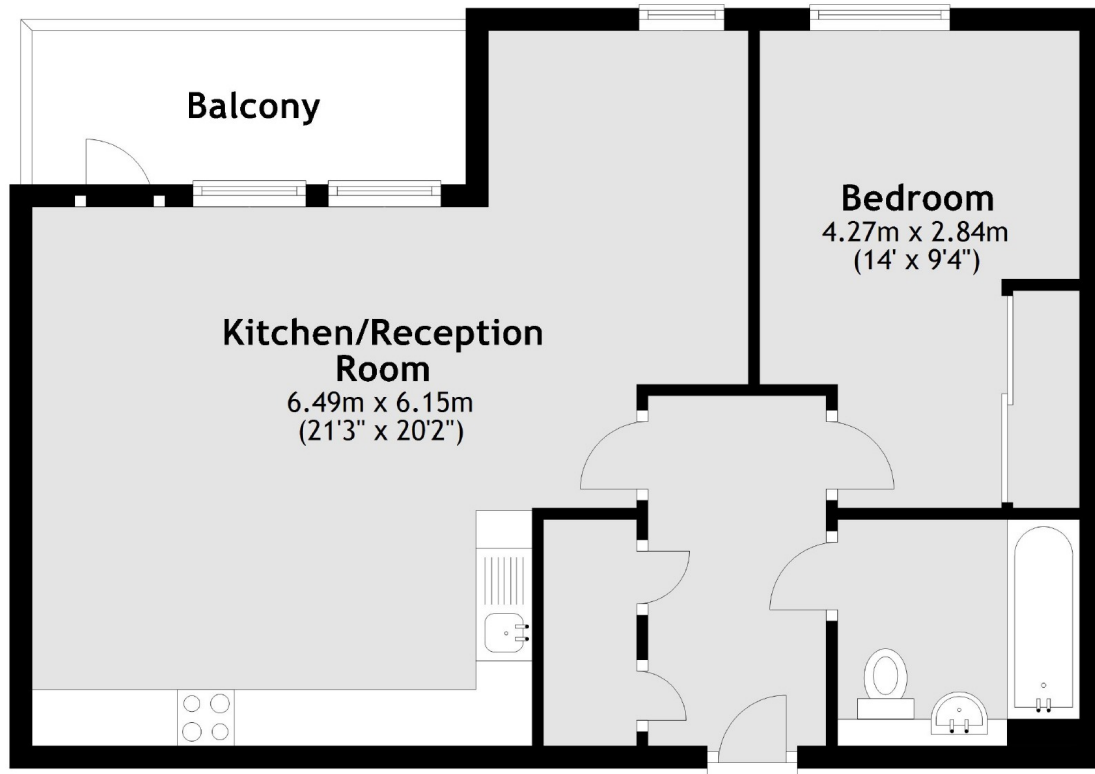
Excellent transport links provide easy access to central London, with Deptford and Greenwich National Rail stations nearby, as well as the Cutty Sark, Greenwich and Deptford Bridge DLR stations.

Within a short walking distance, you can find yourself at Deptford High Street's vibrant market, restaurants, and shops, as well as Greenwich Town Centre and Greenwich Park.

Features

- 567.6Sq Feet
- Rooftop Garden
- Residents Concierge
- Residents Gym
- Balcony
- Modern Development

Cofferdam Way,
London, SE8



Main area: Approx. 52.7 sq. metres (567.6 sq. feet)
Plus balconies, approx. 5.8 sq. metres (62.3 sq. feet)