



West Grove, SE10

£950,000

This exceptional apartment occupies a portion of a significant Grade II* listed building and extends over 1600 sq ft. Presented in immaculate order throughout. Comprising a separate reception room, a vast kitchen/dining room, two double bedrooms, two bathrooms and a large landscaped communal garden. This property is positioned on West Grove, an ancient lane in the heart of Greenwich.

Located within a short walk from the open expanses of Greenwich Park and Blackheath and a short walk from the centre of Greenwich. This unique old town, famous for its maritime history, has an excellent selection of restaurants, pubs and shops, as well as a Greenwich

Features

- Two Double Bedrooms
- Grade II Listed
- Immaculate Throughout
- Period Features Throughout
- Sought After Location
- Wonderful Communal Gardens
- Dual Aspect Views



West Grove, SE10

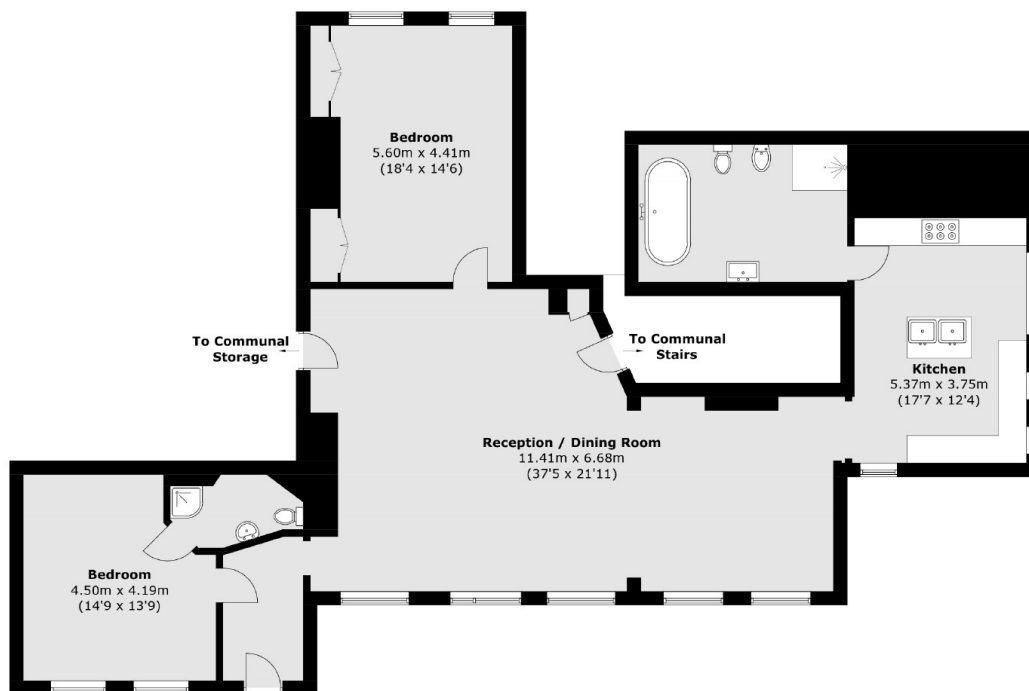
As you enter the property you are welcomed by a grand entrance hall with access into the main principal room. The dual aspect drawing room has original fireplaces, ornate plasterwork and bespoke built-in cabinetry.

On the opposite side of the entrance hall is the space that leads into the family reception room with period features and fire places throughout, Then leading onto the second double bedroom with built in bespoke wardrobes. The reception room then leads onto a large kitchen dining area which provides a great entertaining space. The main family bathrooms benefits from a bath and shower! with an exceptionally unique well!

The building has had a phenomenally rich and intricate history over the past three centuries. This began in 1701, when John Hoare (of the Hoare banking family) commissioned it as a country residence within close proximity of the City of London. There is little doubt that he would have found the vista looking across to the Docklands deeply satisfactory. It was sold circa 1750 to the Grote family, handsomely portrayed by Joshua Reynolds, who created the building as it is today. By the end of the 18th century, it was home to Commander William Larkins of the East India Trading Company, who fashioned the second floor as a private observatory, taking full advantage of the overlook.



West Grove, London, SE10



Total area (approx.): 157.8 sq. m (1,698.5 sq. ft)

Dexters

Greenwich
275 Greenwich High Road
Greenwich
London
Sales
020 8815 2215

Energy Rating: F. We aim to make our particulars both accurate and reliable. However they are not guaranteed; nor do they form part of an offer or contract. If you require clarification on any points then please contact us, especially if you're traveling some distance to view. Please note that appliances and heating systems have not been tested and therefore no warranties can be given as to their good working order.

 **RICS** | Regulated
Estate Agent
and Letting Agent

dexters.co.uk