



Dartmouth Hill, SE10

£400,000

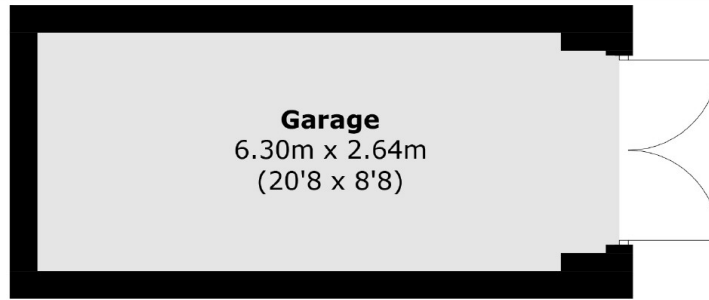
A beautiful bright two bedroom apartment on the much sought after Dartmouth Hill, conveniently located for Deptford, Greenwich, Blackheath and Lewisham. It benefits from a large private garage, an additional driveway for off-street parking, a small communal patio and shared bike storage.

Set on a popular road lined with charming period properties, the apartment also boasts an abundance of green spaces on its doorstep, such as Blackheath Common (1 min walk away), Point Hill and its stunning views across London (2 min walk away), and the historic and renowned Greenwich Park (6 mins walk away). Transport links are also readily available, with Greenwich (Thameslink & Southeastern rail / DLR), Lewisham (Southeastern rail), Deptford Bridge (Overground & DLR) and Elverson Road (DLR) stations all within 0.7 mile, with the addition of Blackheath station just a little further away.

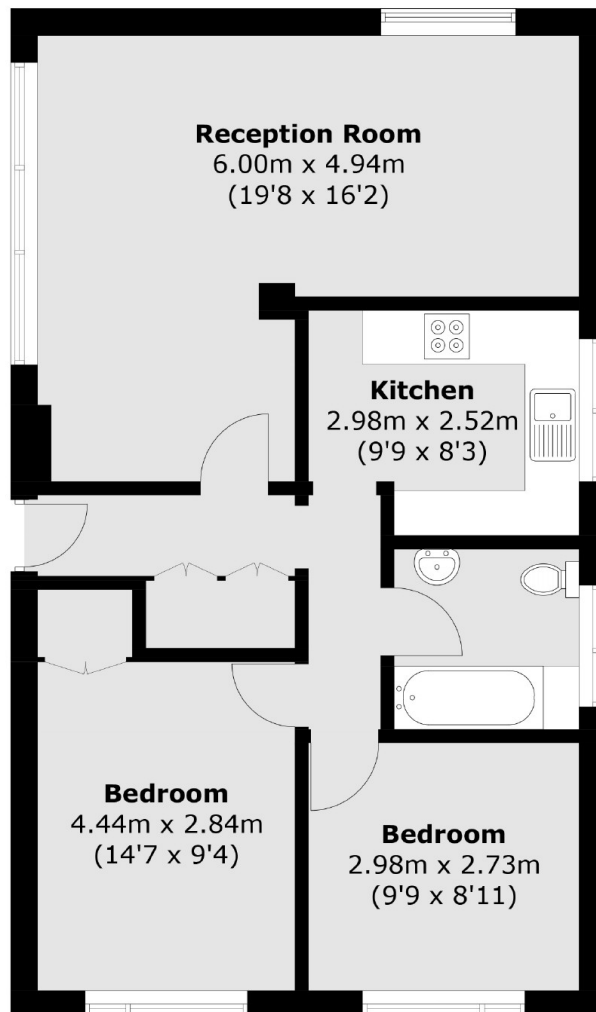
Features

Private Garage
Two Bedrooms
Chain Free
Sought After Location
Ideal First Purchase
Share Of Freehold

Dartmouth Hill, London, SE10



(Not Shown In Actual
Location / Orientation)



Total area (approx.): 63.7 sq. m (685.7 sq. ft)
Garage area (approx.): 17.0 sq. m (183.0 sq. ft)