



Prior Street, SE10

£650,000

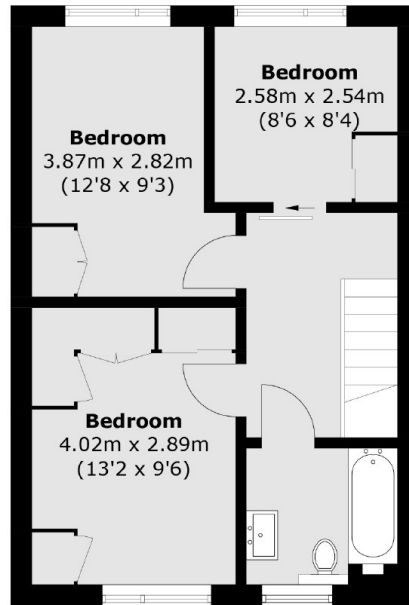
A well presented three bedroom split level maisonette in a sought after location, Benefiting from a downstairs W.C. This property has been finished to a high standard by the current owners.

Prior Street is in the centre of a friendly, community-focused area that enjoys many independent retailers, coffee spots, and fabulous gastro pubs. Set within easy reach of the prestigious Blackheath Village, historic Greenwich, and the glorious green space of Greenwich Park, this wonderful home affords fine dining options and picturesque settings to enjoy

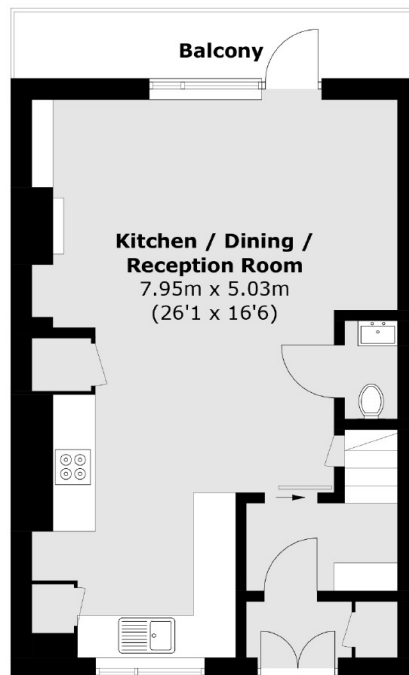
Features

Sought After Location
No Work Required
Duplex Apartment
Downstairs W.C.
Private Balcony
Leasehold

Prior Street,
London, SE10



Second Floor



First Floor

Total area (approx.): 82.9 sq. m (892.3 sq. ft)
Balcony (approx.): 5.4 sq. m (58.1 sq. ft)