



Hawthorne Crescent, SE10

£500,000

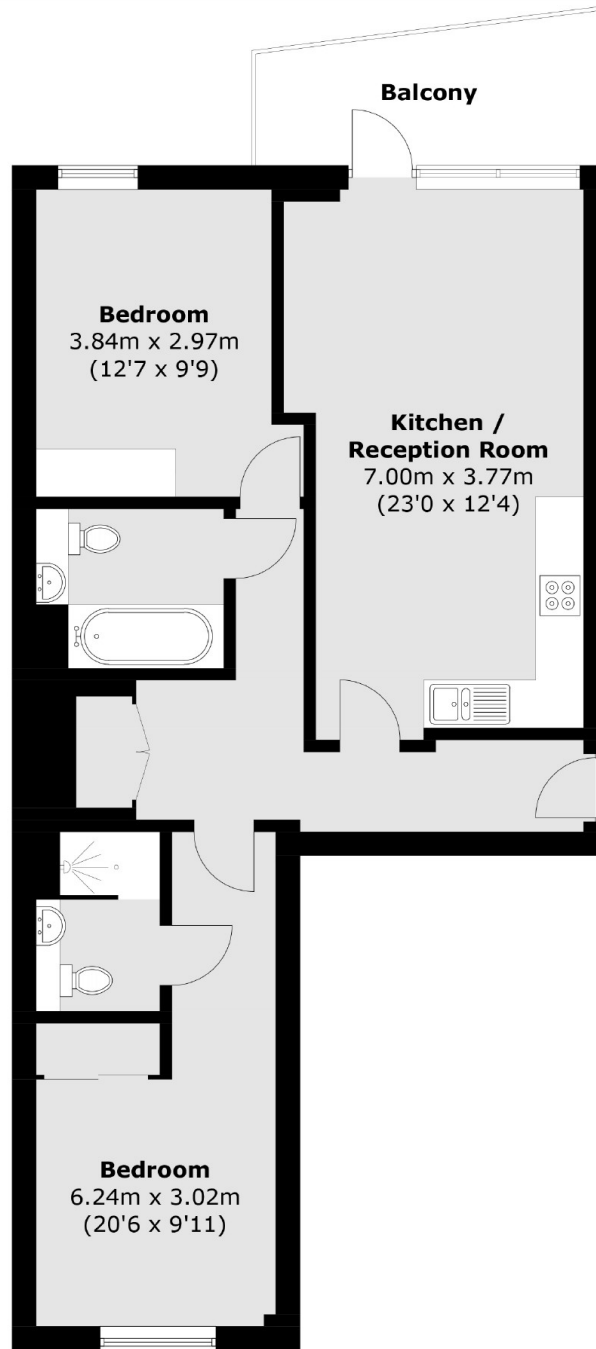
A charming two bedroom, two bathroom apartment situated in a popular development which benefits from a private balcony and beautiful communal gardens.

Greenwich Square is an immensely popular development located in East Greenwich, on the corner of Hawthorne Crescent and Vanbrugh Hill. The development benefits from the Greenwich leisure facilities and Library, which are based on site, along with other shops and restaurants (membership is not included). The Royal Park and town centre are close by, including mainline rail and DLR.

Features

- Third Floor
- Two Bedrooms
- Two Bathrooms
- Private Balcony
- Communal Gardens
- Immaculate Throughout
- Sought After Location

Hawthorne Crescent, London, SE10



Total area (approx.): 74.0 sq. m (796.5 sq. ft)
Balcony area: 7.3 sq. m (78.5 sq. ft)